



THIN BRICK

Endicott



FREEDOM OF EXPRESSION

The freedom to add brick where previously thought impossible or impractical, Endicott thin brick clears the way for innovative, visually stunning solutions that are easy to install, affordable and hard to ignore.

WITH ENDICOTT
THIN BRICK,
LESS IS MORE.



DISCOVER NEW WAYS TO ACHIEVE YOUR UNIQUE
ARCHITECTURAL VISION WITH ENDICOTT THIN
BRICK. SUITED TO YEAR-ROUND COMMERCIAL,
RESIDENTIAL AND REMODELING APPLICATIONS,
ENDICOTT THIN BRICK IS THE IDEAL CHOICE FOR
PRECAST, TILT-UP, PREFABRICATED WALL, AND
JOB-APPLIED PROJECTS.

Brick Color: Manganese Ironspot

Augsburg University, Hagfors Center – Minneapolis, MN

BOSTON COLLEGE FISH FIELD HOUSE



CHESTNUT HILL
MASSACHUSETTS



PROJECT DETAILS

COLOR

Desert Ironspot Dark
Coppertone

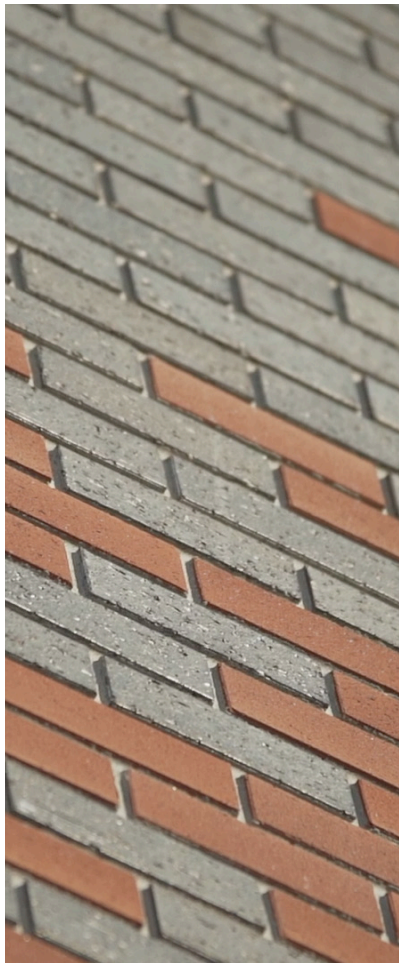
SIZE

Modular

TEXTURE

Velour

DANIEL YOUNG ELEMENTARY



BLUE SPRINGS
MISSOURI



PROJECT DETAILS

COLOR

Burgundy Sands
Manganese Ironspot

SIZE

Modular

TEXTURE

Velour
Sanded

DC WEST ELEMENTARY SCHOOL



VALLEY
NEBRASKA



PROJECT DETAILS

COLOR

Dark Sandstone

SIZE

Modular

TEXTURE

Artisan

AUGSBURG UNIVERSITY, HAGFORS CENTER



MINNEAPOLIS
MINNESOTA



PROJECT DETAILS

COLOR

Medium Ironspot #46
Manganese Ironspot
Dark Ironspot

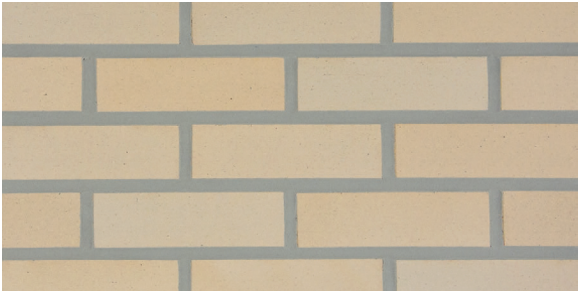
SIZE

Norman

TEXTURE

Smooth

COLORS



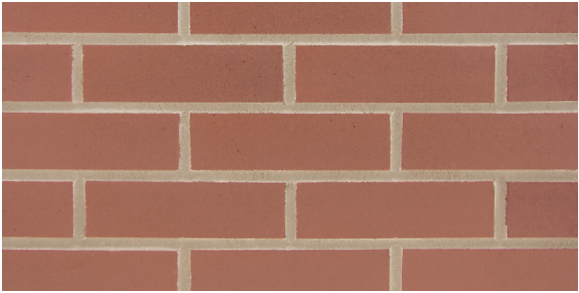
Ivory Blend



Golden Buff



Red Blend



Burgundy Blend



Light Grey Blend



Grey Blend



Ruby Red



Red Ironspot



Light Sandstone



Dark Sandstone



Desert Ironspot Light



Desert Ironspot Dark



Buff Blend



Rose Blend

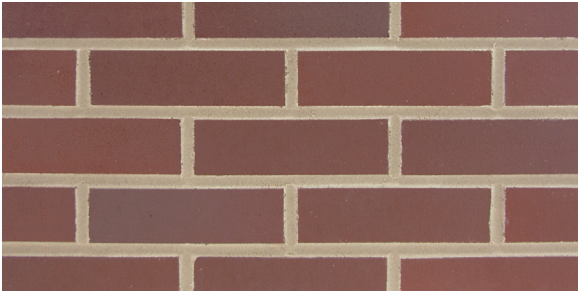


Coppertone



Copper Canyon

COLORS



Bordeaux Blend



Manganese Brown



Grey Sands



Merlot Sands



Executive Ironspot



Sienna Ironspot



Burgundy Sands



Sahara Sands



Medium Ironspot #77



Medium Ironspot #46



Autumn Sands



Dark Ironspot



Manganese Ironspot



Orleans Sands

TEXTURES



Smooth

Available in 1/2", 5/8" and 1" thick.



Vertical Score

Available in:
• 5/8" thick
• Modular and Closure



Velour

Available in 1/2" and 1" thick.



Artisan

Available in:
• 5/8" thick
• Modular and Closure



Matt

Available in:
• 5/8" thick
• Modular and Closure



Heritage

Available in 5/8" and 1" thick.

TEXTURES



Square Edge no Texture

Available in 1/2" thick.

KEYBACK DESIGN

To enhance in-place installation, Endicott thin brick features a keyback design, which provides a mechanical lock into the concrete for maximum durability and permanence. It also provides the advantage of increased freeze-thaw pull-out strength.

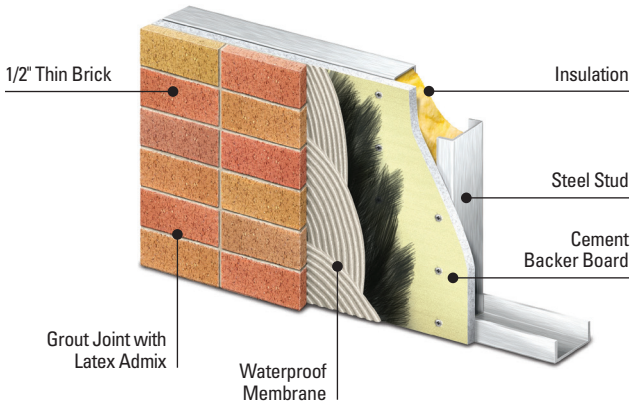


APPLICATIONS

Some of the more common application processes for thin brick include:

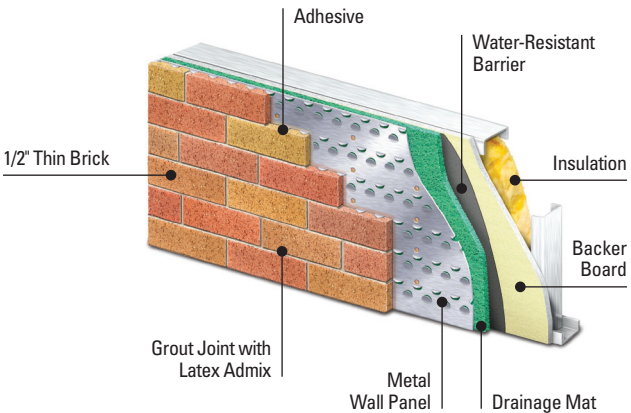
PANEL SYSTEM

Prefabricated or On-Site Panelization



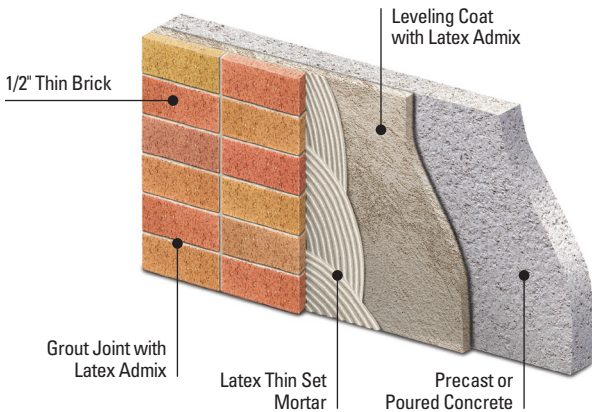
METAL PANEL WALL SYSTEM

Prefabricated or On-Site Panelization



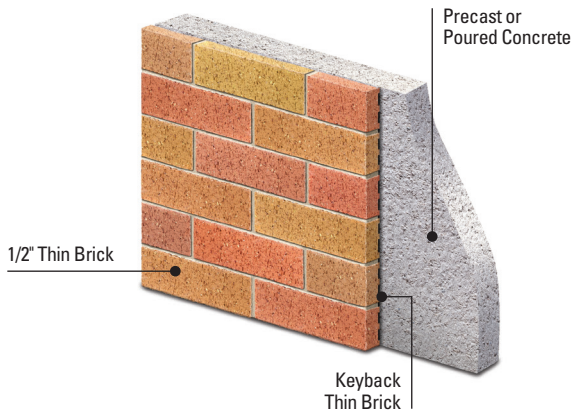
THIN BED SYSTEM WITH LEVELING COAT

Job Applied Over Precast or Poured in Place Concrete



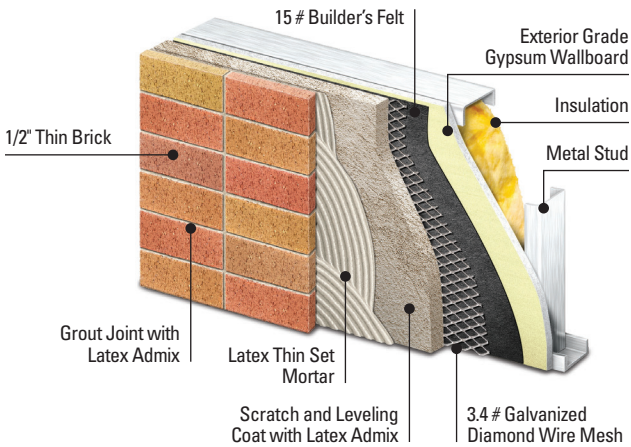
THIN BRICK SYSTEM

Embedded in Precast Concrete



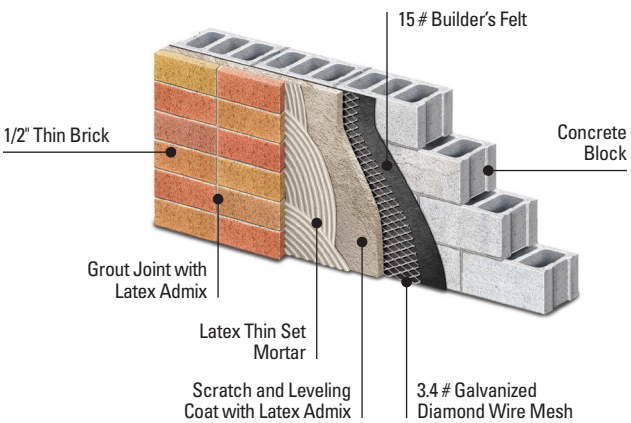
MORTAR BED SYSTEM

Prefabricated or On-Site Panelization



MORTAR BED SYSTEM

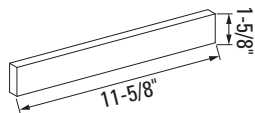
Concrete Block Infill Wall or Existing Masonry



SIZES

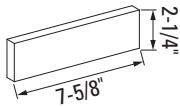
ROMAN

1-5/8" x 11-5/8"



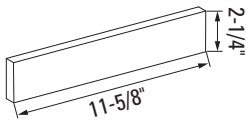
MODULAR

2-1/4" x 7-5/8"



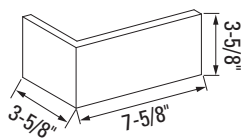
NORMAN

2-1/4" x 11-5/8"



BC448

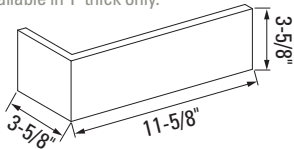
3-5/8" x 7-5/8" x 3-5/8"



BC4412

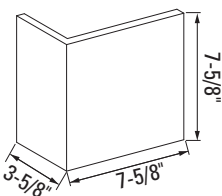
3-5/8" x 11-5/8" x 3-5/8"

NOTE: Available in 1" thick only.



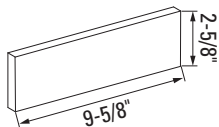
BC848

3-5/8" x 7-5/8" x 7-5/8"



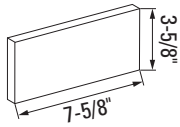
KINGSIZE

2-5/8" x 9-5/8"



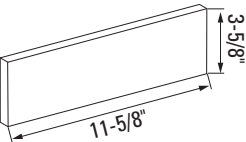
CLOSURE

3-5/8" x 7-5/8"



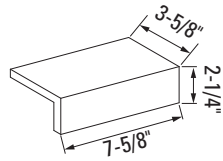
UTILITY

3-5/8" x 11-5/8"



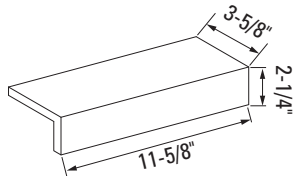
EDGE CAP A

3-5/8" x 7-5/8" x 2-1/4"



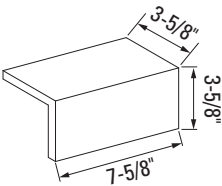
EDGE CAP B

3-5/8" x 11-5/8" x 2-1/4"



EDGE CAP C

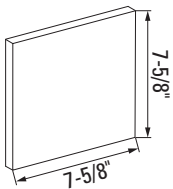
3-5/8" x 7-5/8" x 3-5/8"



TRIPLE

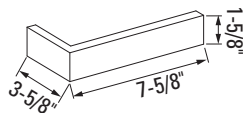
7-5/8" x 7-5/8"

NOTE: Available in 1/2" and 5/8" thick only.



BC1-5/8" 48

3-5/8" x 7-5/8" x 1-5/8"



BC1-5/8" 412

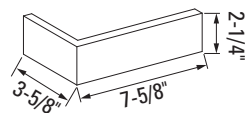
3-5/8" x 11-5/8" x 1-5/8"

NOTE: Available in 1" thick only.



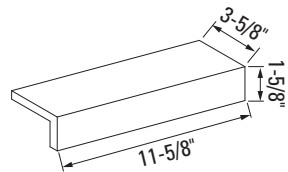
BC2-1/4" 48

3-5/8" x 7-5/8" x 2-1/4"



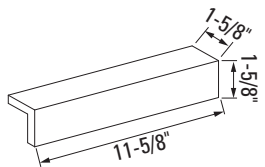
EDGE CAP G

3-5/8" x 11-5/8" x 1-5/8"



EDGE CAP H

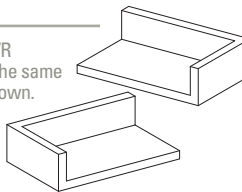
1-5/8" x 11-5/8" x 1-5/8"



EDGE CAP CORNERS

Left/Right

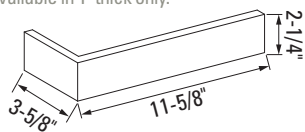
NOTE: 3-Sided L/R dimensions are the same as Edge Caps shown.



BC2-1/4" 412

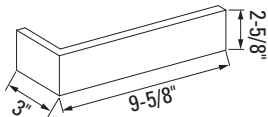
3-5/8" x 11-5/8" x 2-1/4"

NOTE: Available in 1" thick only.



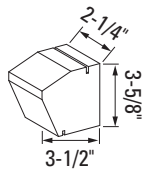
BC2-5/8" 310

3" x 9-5/8" x 2-5/8"



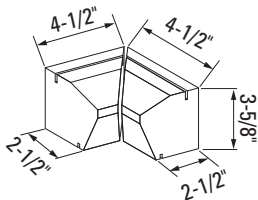
ROLOK SILL

2-1/4" x 3-1/2" x 3-5/8"



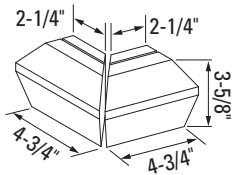
ROLOK SILL INTERNAL CORNER

4-1/2" x 2-1/2" x 3-5/8"



ROLOK SILL EXTERNAL CORNER

2-1/4" x 4-3/4" x 3-5/8"



CREIGHTON UNIVERSITY SCHOOL OF DENTISTRY



OMAHA
NEBRASKA



PROJECT DETAILS

COLOR

Burgundy Sands No Black
Autumn Sands No Black

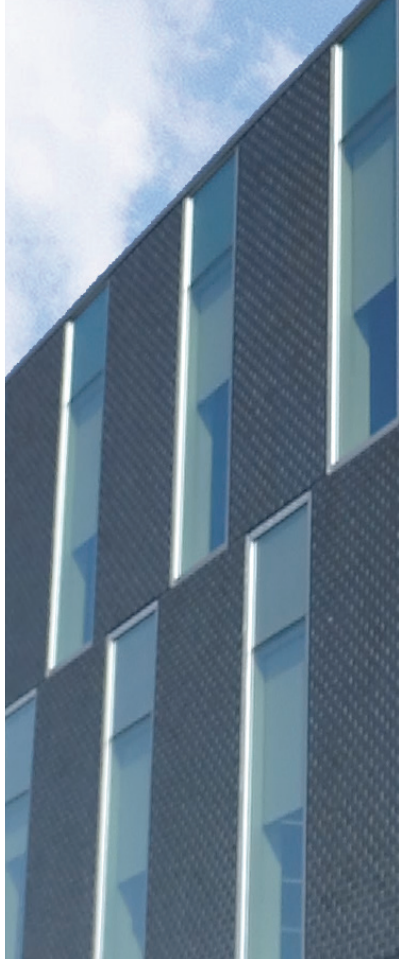
SIZE

Modular

TEXTURE

Square Edge

HONOR CREDIT UNION OPERATION CENTER



BERRIEN SPRINGS
MICHIGAN



PROJECT DETAILS

COLOR

Manganese Ironspot

SIZE

Modular

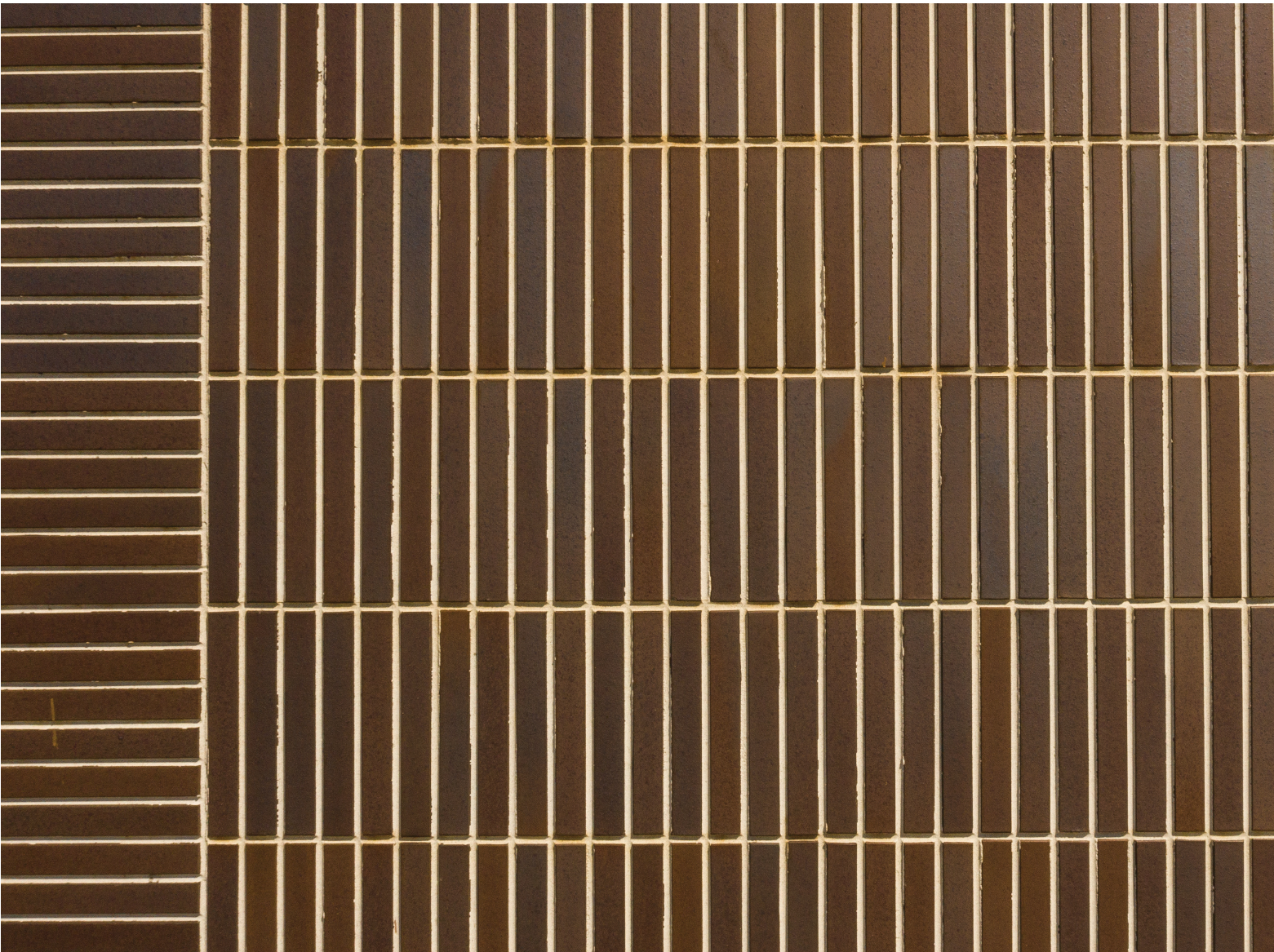
TEXTURE

Velour

HEART MINISTRY CENTER



OMAHA
NEBRASKA



PROJECT DETAILS

COLOR

Sienna Ironspot

SIZE

Roman

TEXTURE

Smooth

JOEY DTLA RESTAURANT



LOS ANGELES
CALIFORNIA



PROJECT DETAILS

COLOR

Ivory Blend

SIZE

Norman

TEXTURE

Velour

GLAZED SERIES



SN-1



SN-2



VC-1



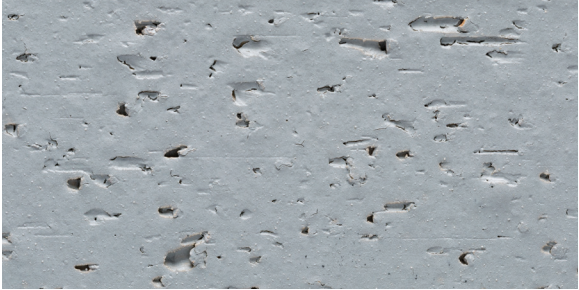
VC-2



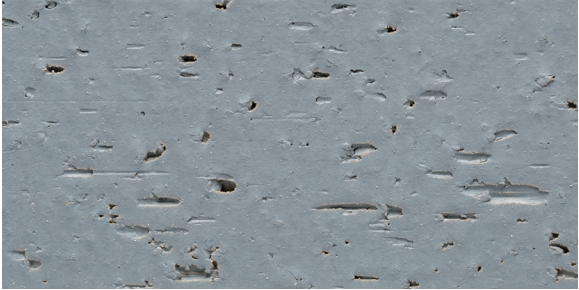
SN-3



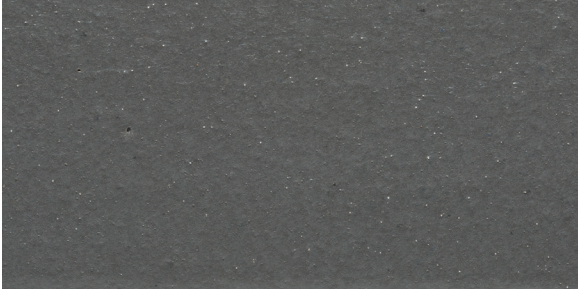
SN-4



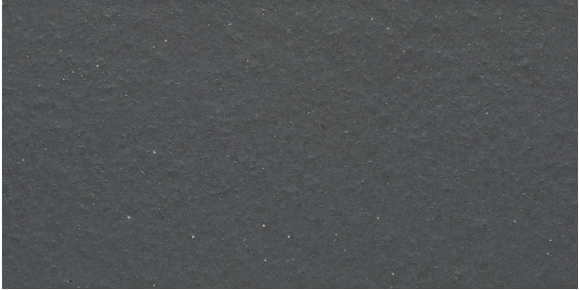
VC-3



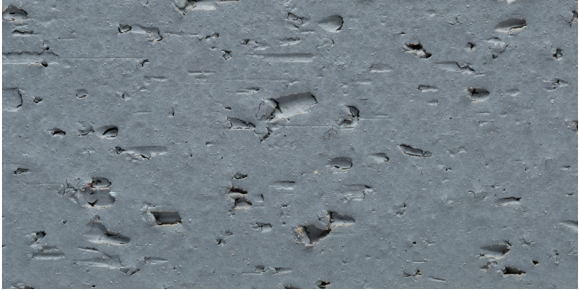
VC-4



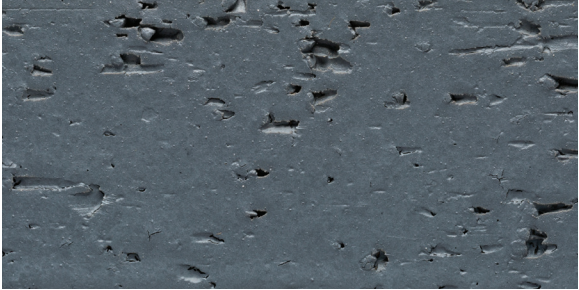
SN-5



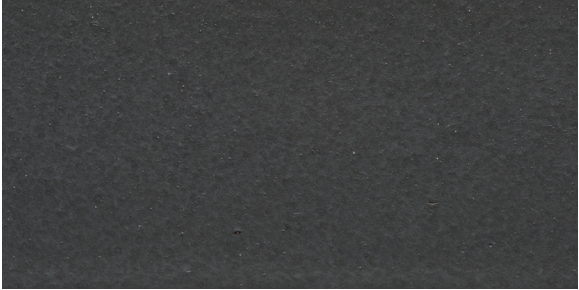
SN-6



VC-5



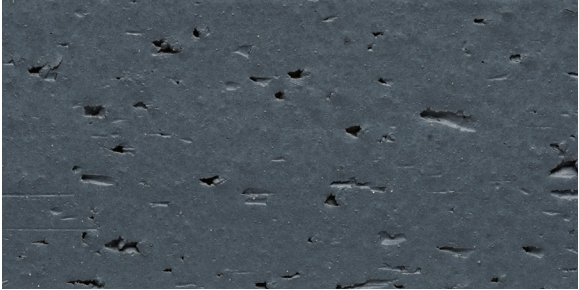
VC-6



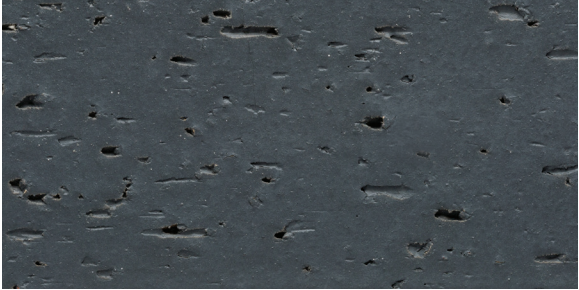
SN-7



SN-8



VC-7



VC-8

Distributor Hawaii & Guam

EVERGREEN BY DEBRA, LLC

- Ceramic & Glass Tile • Art Images in Hard Surfaces
- Planters in Ceramic & Fiberglass • Diamond Tools

**Woman Owned Small Business
Certified DBE**

47-388 Kamehameha Hwy
Kaneohe, HI 96744-4736 USA
Ph 808-239-6599 Fax 808-239-8556
EvergreenbyDebra.com




ENDICOTT

