

OCTOBER 2022

QUICK SHIP PROGRAM USA Stock 2022

Deutsche Steinzeug America

USA Stock 2022



Table of Contents

Introduction	1
Amano	2
Basic Stone	3
Centino	4
Craft	5
District	6
Fresh	8
Loop	11
Pattern	14
Streetlife	15
Technical Data	17



Who is Agrob Buchtal?

How do designers find the necessary freedom for their creativity? With the great diversity of the product range of Agrob Buchtal. Agrob Buchtal offers practically unlimited design options, with a variety of formats ranging from mini-mosaics to large format tiles. This opens a wide spectrum of design options for giving surfaces a rhythmic structure, setting accents, or creating geometric designs. The variety of colors permits ultimate freedom of expression. Agrob Buchtal products ensure an individual look, not only in hotels and shopping malls, but also in the private residence sector. With the object of supporting creative architectural concepts, Agrob Buchtal also has competencies in special project-specific solutions, such as swimming pools and facades.

What is Hytect?

As it is estimated we spend 90% of our life indoors, it is important to have reliable healthy living environments. Hytect technology offered by Deutsche Steinzeug makes a significant contribution to healthy living environments by impeding the growth of mold, bacteria, and other microorganisms, making surfaces easier to clean, and decomposing pollutants in the air, such as formaldehyde, grease odors, and chlorine in enclosed pool areas. All of this is achieved through the effects of light and air.

Titanium Dioxide is fired insolubly and permanently into the tile surface at a high temperature. As a permanent catalyst, it triggers a practically life-long reaction, activated by light (photo catalysis) with oxygen and humidity. This interaction makes surfaces hydrophilic, allowing water to sheet dirt off the surface, kill germs and bacteria on contact, and eliminate odors.





- 1"x1" porcelain mosaic with slight angulation and high gloss finish
- 11 colors
- Stocked in the U.S.A
- Wall use only
- Interior and exterior applications
- Meets freeze/thaw requirements
- Suitable for submerged water applications
- HYTECT technology on all items



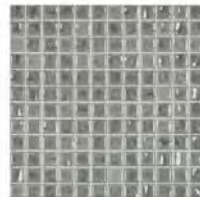
41920H
Cream



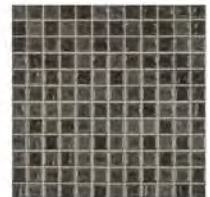
41921H
Taupe



41922H
Light Grey



41923H
Medium Grey



41924H
Anthracite



41925H
Ice Blue



41926H
Silk Blue



41927H
Pure Blue



41928H
Metallic



41929H
Medium Grey
Metallic



41930H
Taupe Metallic

BASIC STONE



- 2"x2" porcelain mosaics
- 5 neutral colors - color through body porcelain mosaics
- Interior and exterior. Freeze/thaw resistant
- Suitable for submerged water applications
- DCOF: .53
- Matte Secura _ Antislip finish. Exceeds DCOF requirements for commercial use
- Ideal for shower floors and locker rooms
- HYTECT technology on all items
- Stocked in the U.S.A.



Black 42200H



Medium Gray 42201H



Taupe 42203H



Beige 42204H

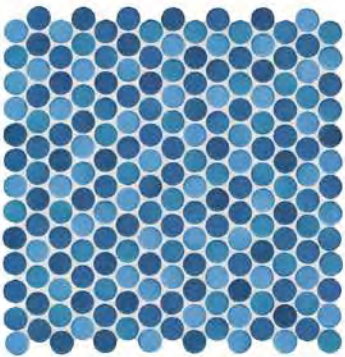


Light Gray 42202H

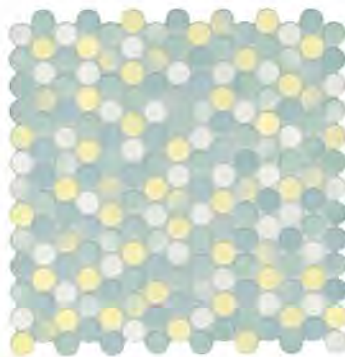
CENTINO

- 1" porcelain penny rounds
- 3 color options in the favorite blends
- Interior and exterior. Freeze/thaw resistant
- Suitable for submerged water applications
- Two finishes - Glossy and Secura _ Antislip finishes
- DCOF: .62
- Matte Secura _ Antislip finish. Exceeds DCOF requirements for commercial use
- HYTECT technology on all items
- U.S. Stocked

Matte Secura _ Antislip Finish



True Blue 8863H

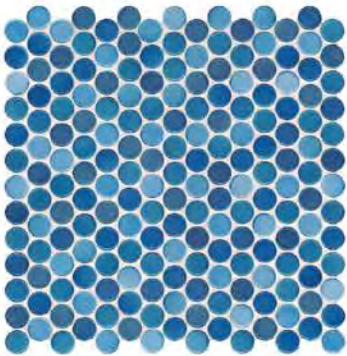


Light Lime 8864H

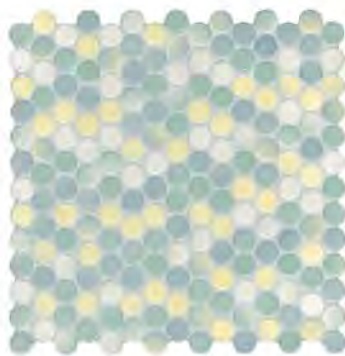


Feather Gray 8867H

Glossy Finish



True Blue 8823H



Light Lime 8824H



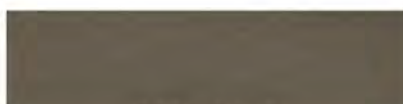
Feather Gray 8827H



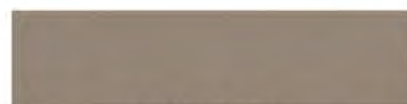
- Extruded porcelain
- 2.5"x10" strip tile
- U.S. Stocked in 11 colors
- Glossy finish
- Interior and exterior applications
- Meets freeze/thaw requirements
- Wall use only



9020-2120
Olive Green Flamed



9021-2120
Dark Grey



9022-2120
Mid Grey



9023-2120
Golden Yellow Flamed



9024-2120
Blue Green Flamed



9025-2120
Amber Flamed



9026-2120
White



9030-2120
Jade Green



9031-2120
Beryl Red



9032-2120
Benit Blue



9033-2120
Hematite Black



- Classic beveled tile in two sizes
- 2"x4" porcelain mosaics and 4"x10" porcelain field tile
- Available and U.S. stocked in 8 colors
- Interior and exterior wall use – freeze / thaw resistant
- Hytect Technology on all items

2"x4"



45550H
Almond Beige



45551H
White



45552H
Pitch Black



45553H
Ash Grey



45554H
Miami Mint



45555H
Denim Blue



45556H
Racing Green



45557H
Burgundy Red

4"x10"



45600H
Almond Beige



45604H
Miami Mint



45601H
White



45605H
Denim Blue



45602H
Pitch Black



45606H
Racing Green



45603H
Ash Grey



45607H
Burgundy Red



- 1"x1" and 2"x2" porcelain mosaics
- Two finishes available, glossy and matte Secura Antislip
- Matte Secura Antislip meets DCOF requirements for commercial use
- Interior and exterior use
- Suitable for submerged water applications
- HYTECT technology on all items
- Stocked in the U.S.A.

2" Matte Secura



41400H
Snow White



41401H
Desert Sand Mix



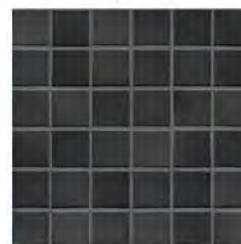
41402H
Taupe Mix



41403H
Light Grey Mix



41404H
Medium Grey Mix



41405H
Midnight Black Mix

1" Glossy



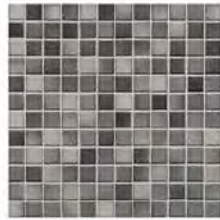
41200H
Snow White



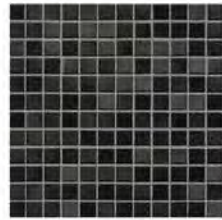
41201H
Desert Sand Mix



41203H
Light Grey Mix



41204H
Medium Grey Mix



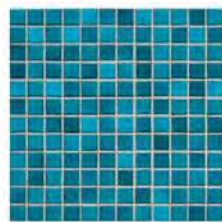
41205H
Midnight Black Mix



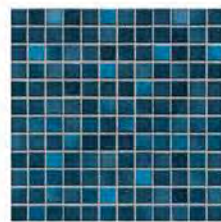
41206H
Denim Blue Mix



41207H
Light Blue Mix



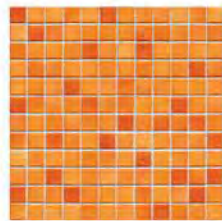
41208H
Pacific Blue Mix



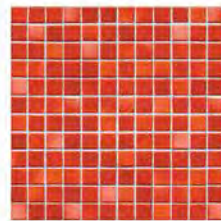
41209H
Midnight Blue Mix



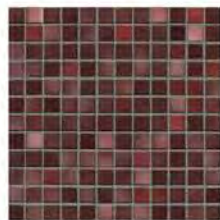
41210H
Vivid Violet Mix



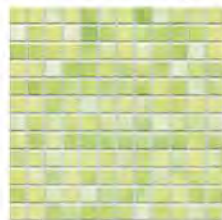
41211H
Sunset Orange Mix



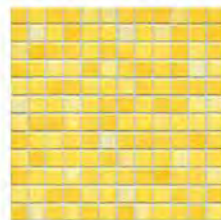
41212H
Coral Red Mix



41213H
Mystic Red Mix



41214H
Lime Green Mix



41215H
Sunshine Yellow Mix



41520H
Aqua Glossy
Gradient
Special Order

1" Matte Secura



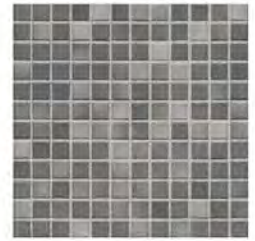
41300H
Snow White



41302H
Taupe Mix



41303H
Light Grey Mix



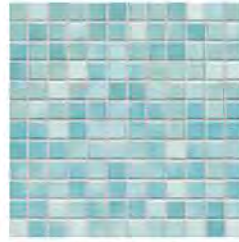
41304H
Medium Grey Mix



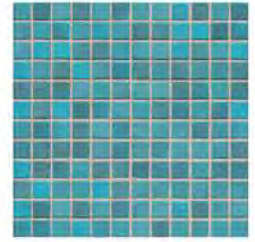
41305H
Midnight Black Mix



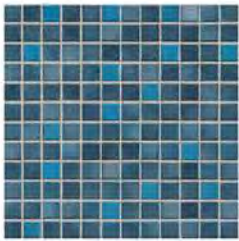
41306H
Denim Blue Mix



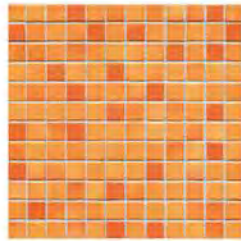
41307H
Light Blue Mix



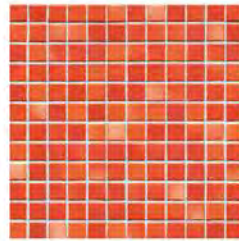
41308H
Pacific Blue Mix



41309H
Midnight Blue Mix



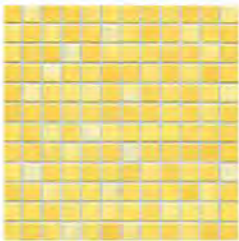
41311H
Sunset Orange Mix



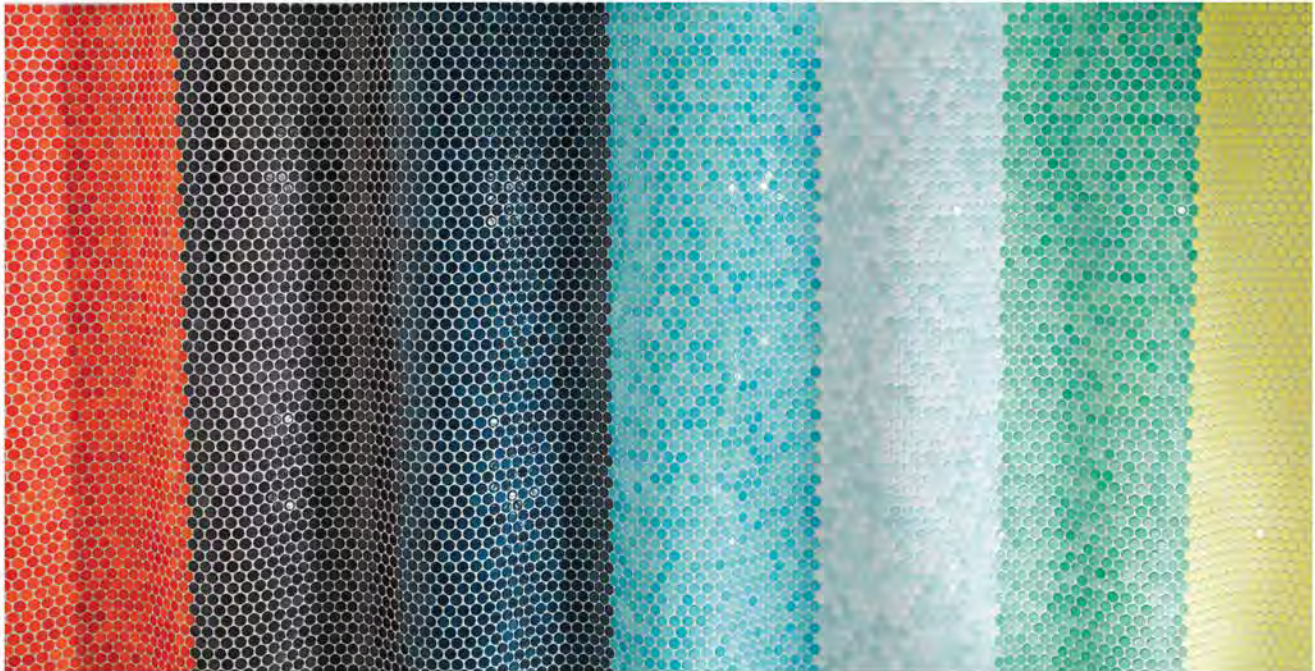
41312H
Coral Red Mix



41314H
Lime Green Mix



41315H
Sunshine Yellow Mix



- 1" and 1/2" penny rounds
- 15 glossy colors and 7 matte Secura anti-slip colors
- Stocked in the U.S.A
- Special order custom gradients available
- Matte Secura DCOF: .62
- Interior and exterior. Freeze/thaw resistant.
- Suitable for submerged water applications
- HYTECT technology on all items

1" Matte Secura Antislip Penny Rounds



40040H
Arctic White



40041H
Night Black



40042H
Light Ivory



40040H
Lt. Diamond Grey



40047H
Light Aqua Blue



40048H
Aqua Blue

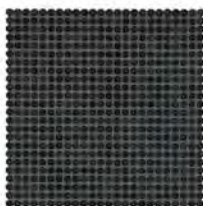


40071H
Sea Green

1/2" Glossy Penny Rounds



40000H
Arctic White



40001H
Night Black



40002H
Light Ivory



40003H
Ivory



40004H
Lt. Diamond Grey



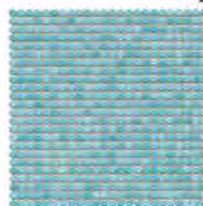
40005H
Diamond Grey



40006H
Denim



40007H
Light Aqua Blue



40008H
Aqua Blue



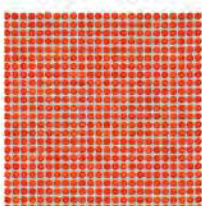
40009H
Steel Blue



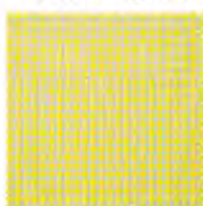
40010H
Dark Violet



40011H
Sea Green



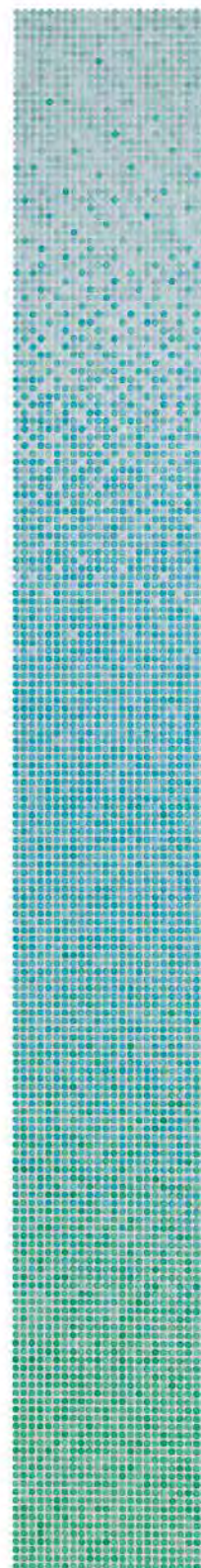
40012H
Coral Red



40013H
Lemon Yellow



40014
Bronze Metallic



40056H
Ocean Gradient
Special Order

1" Glossy Penny Rounds



40020H
Arctic White



40021H
Night Black



40022H
Light Ivory



40023H
Ivory



40024H
Lt. Diamond Grey



40025H
Diamond Grey



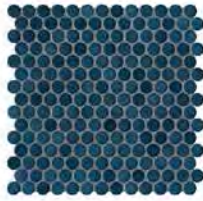
40026H
Denim



40027H
Light Aqua Blue



40028H
Aqua Blue



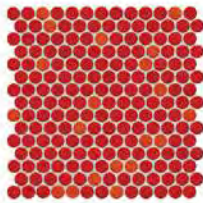
40029H
Steel Blue



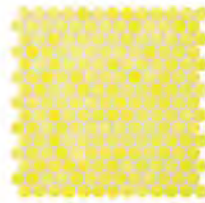
40030H
Dark Violet



40031H
Sea Green



40032H
Coral Red



40033H
Lemon Yellow



40034
Bronze Metallic



40057H
Ocean Gradient
Special Order

PATTERN



- 2"x2" mosaics
- Thermoplastic backing can be used in submerged water applications
- U.S. Stocked in two color options
- Matte Secura Antislip finish
- Meets DCOF requirements for commercial use
- Hytect Technology on both items



42501H-73
Grey



42500H-73
Multicolor



- Rectified, color-body porcelain tile
- 24"x24" and 24"x48" formats
- U.S. Stocked in 4 colors
- Urban industrial inspired design with a matte finish
- Meets DCOF requirements for commercial use
- Interior and exterior applications
- Meets freeze/thaw requirements
- HYTECT technology on all items

24"x24"



8820-B700HK
Asphalt



8821-B700HK
Basalt



8822-B700HK
Cement



8823-B700HK
Rust

24"x48"



8820-B770HK
Asphalt



8821-B770HK
Basalt



8822-B770HK
Cement



8823-B770HK
Rust



Product quality

“Made in Germany” – that’s the standard.

Top-products thanks to modern technology

With regard to quality, AGROB BUCHTAL does not accept any compromises. This is ensured by the modern manufacturing technology at the four sites in Germany where the majority of all the products – from small mosaics up to facade elements – are produced. There, an experienced workforce of approx. 1,200 qualified employees ensures the high degree of precision indispensable, for example, at the production of rectified large formats on the basis of carefully selected raw materials.



Production in Germany
at 4 sites:

- Alfter-Witterschlick
- Ötzingen
- Schwarzenfeld
- Sinzig

Surface Coatings and Upgradings

Protecta Surface Upgrading



Better Beats Good ...

Unglazed vitrified tiles are hard-wearing and resistant by nature. Thanks to the Protecta surface upgrading, the stain and dirt resistance could be improved considerably: during the firing process, the coating applied in-plant is ceramically bonded to the biscuit and closes the existing “micropores” quite natural for unglazed ceramics. In this way, the penetration of substances forming stains is prevented. Thus, an impregnation is no longer required and may possibly even have a negative effect in the case of slip-resistant tiles with Protecta surface upgrading, as the impregnating agent can not penetrate the tile but remains on the surface as lubricating film.

Products with Protecta surface upgrading are marked with this symbol in the corresponding series:



Hygiene

Glazed tiles and tiles with Protecta surface upgrading of Deutsche Steinzeug ensure the best possible hygiene conditions. Thanks to the closed surface, they offer no possibility for germs to proliferate. Tests of institutes for hygiene confirm the suitability for the covering of drinking water reservoirs. Hyper-sensitive people such as those suffering from allergies make the best experiences with tiles.

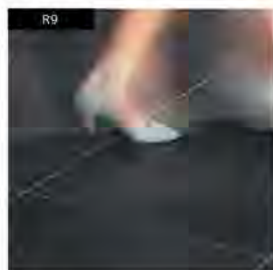
Slip resistance

for all areas of application.

AGROB BUCHTAL: pioneer of slip resistance.

Slip-resistant tiles, marked by the quality seal "GRIP", are one of the core competences of AGROB BUCHTAL. Since the market launch of the first slip-resistant tiles in the 1930s, this innovation has been permanently further developed by AGROB BUCHTAL by intensive research. The results include renowned prizes for exemplary surface designs, functional improvements such as low-noise and vibration-free

driving on ceramic coverings as well as micro-rough special glazes for the barefoot areas in swimming pools. The quality of slip-resistant tiles of AGROB BUCHTAL is guaranteed by permanent controls of the in-house laboratories and neutrally supervised at regular intervals by external institutes as well as the participation in interlaboratory tests with accredited test laboratories.



Slip Resistance

1. Coefficient of Friction/Slip Resistance

Workshop rules as well as accident prevention regulations require floors to be smooth, slip-resistant and easy to clean. Special protective measures against slipping are necessary where there is a risk as a result of the use of water, oil, slush, grease or waste. This should be taken into consideration when choosing the surface material. This clear requirement is based on investigations carried out by the insurance companies, which proved that slipping is the primary cause of accidents.

1.1. Industrial Areas

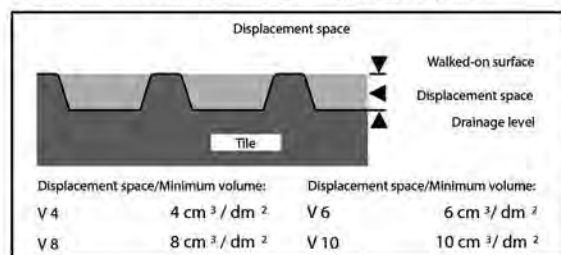
Competent authority:

Deutsche Gesetzliche Unfallversicherung,
Mittelstraße 51, 10117 Berlin-Mitte, tel.: +49 (0)30 28876-3800,
fax: - 3808, www.dguv.de, info@dguv.de

Test standard: DIN 51130

Code of practice: DGUV regulation 108-003 "Floors in work rooms and work areas with high risk of slipping" (previous BGR 181)

Test procedure: Inclined plane, safety footwear worn, test medium oil. The surface finish can be smooth, fine-rough, rough or profiled.



The displacement space (V4-V10) is the open space between the upper walked-on surface and the drainage level of profiled surfaces.

Test on "inclined plane"

Valuation groups	Angle of inclination	Industrial + commercial areas
R9	> 6°- 10° low static friction	
R10	> 10°- 19° normal static friction	
R11	> 19°- 27° increased static friction	
R12	> 27°- 35° high static friction	
R13	> 35° very high static friction	

The indicated angles of inclination exclusively serve for the assignment of the valuation groups and can not be equated with the angles of inclination of slopes/ramps.

Jasba

Non-slip tiles: for optimum surefootedness

Jasba offers non-slip tiles with Secura coating - for applications in dry and wet barefoot areas such as in private and public wellness areas, showers and hallways, kitchens and sales points as well as in schools and kindergartens.

Jasba non-slip tiles with R 10/B feature Secura non-slip, colour-fast surface. Thanks to their colour co-ordination with the wall and floor tiles, Jasba Secura tiles are barely distinguishable from their smooth counterparts. With the result that the harmony of a perfect room creation is maintained.



Care and Maintenance

Regular cleaning of ceramic and porcelain tiles will be required at different intervals depending on the degree of soiling and utilization of the tile: weekly, daily, or several times a day in very heavily frequented areas. In general, it is sufficient to use warm water with commercially available cleaners (neutral pH and non-detergent) for regular cleaning. Cleaned areas should be rinsed thoroughly to avoid leaving any residue.

In the case of calcium and rust stains, scouring powder should be tried first. Be sure to rinse thoroughly before trying other cleaners. If this is unsuccessful, an acid cleaning with sulfamic acid must be used. Be sure to follow manufacturer's instructions.

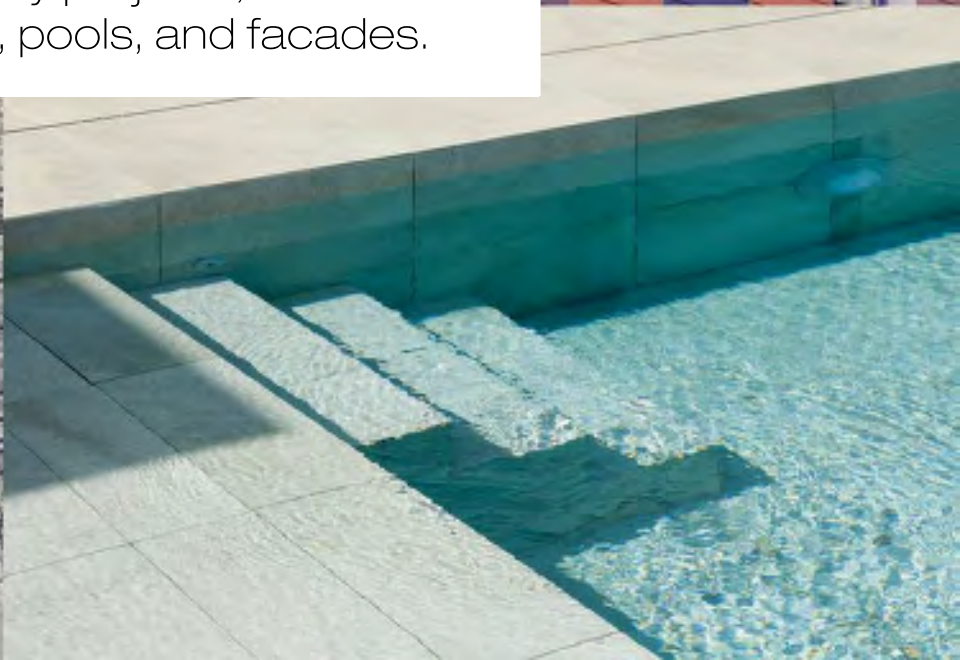
Tar, paint, and resins are best removed with organic solvents such as naphtha or acetone. Be sure to use these solvents in a well-ventilated area. Caution: Solvents of this type are highly combustible!

The use of surface or penetrating sealers is not recommended on glazed ceramic or porcelain tiles. Use of such sealers will result in the appearance of traffic patterns in the floor where the sealer is wearing off.





Contact
Evergreen by Debra for your other
specialty projects, such as
DryTile, pools, and facades.





Deutsche Steinzeug America, Inc.

Distributor Hawaii & Guam
EVERGREEN BY DEBRA, LLC
• Ceramic & Glass Tile • Art Images in Hard Surfaces
• Planters in Ceramic & Fiberglass • Diamond Tools

**Woman Owned Small Business
 Certified DBE**

47-388 Kamehameha Hwy
 Kaneohe, HI 96744-4736 USA
 Ph 808-239-6599 Fax 808-239-8556
 EvergreenbyDebra.com

