

Mosa.

Education







**Applied**  
knowledge





Mensa Schulzentrum  
Straelen, Germany  
Core Collection Solids

Architects tell us they feel a certain assurance when specifying Mosa. This is because of Mosa's vast experience in both tile technology and innovation, as well as real-world experience with world-class projects in education from childhood learning environments to elite universities with complex facilities planning needs. Crafted to hold up to various conditions such as high traffic and chair drag and made with superior slip resistance that performs in pools and food service areas, Mosa technology creates enduring beauty.

# Sustainable design



Mosa makes the world's first and only Cradle to Cradle Certified Gold-certified porcelain tile, adhering to elevated standards of sustainability. These porcelains embody all of the TCNA-cited health, safety and environmental benefits, and may also qualify your project for LEED points, making Mosa a perfect choice for education projects. Cradle to Cradle Certified is a certification mark licensed exclusively for the Cradle to Cradle Products Innovation Institute.





# Enduring

Mosa offers measurable performance standards that provide extra insurance to specifiers and their education clients. Mosa has applied state-of-the-art technology to develop a range of porcelain tile that exceeds the minimums for wear-resistance for lasting beauty. Mosa products also exceed industry standards for surface integrity, slip-resistance, bond strength and breaking strength.

**Gonzaga University Student Union**  
Spokane, WA  
Terra Tones 216XYZV











Georgia Sky Club Stadium  
Georgia, GA  
Terra Tones 203XYZV / Core Collection Terra 226V

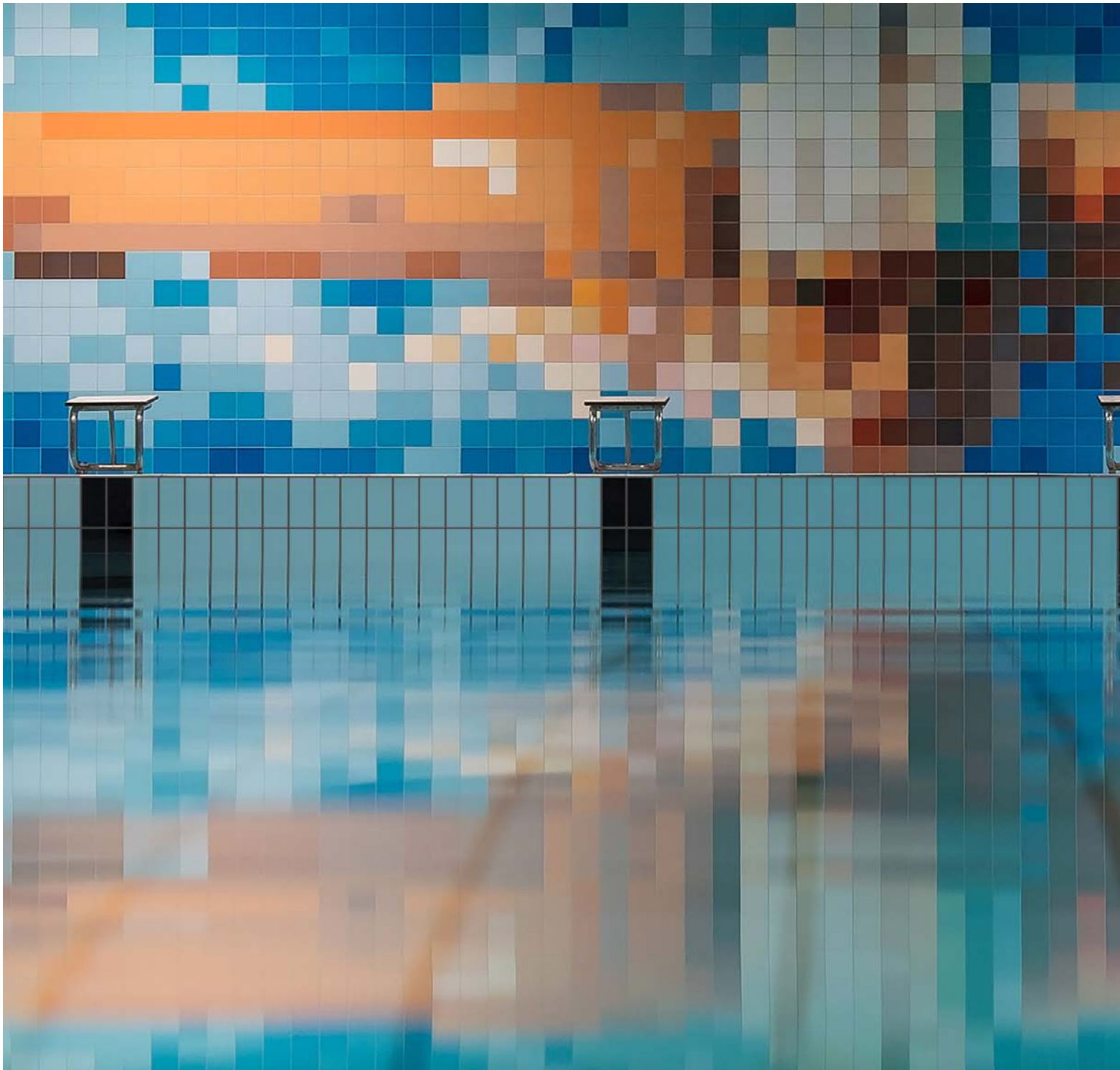


# Sports facilities

Mosa tile was made to work beautifully and safely in even the most demanding and complex pool, locker and training facilities. Thoughtful extras such as Mosa's anti-slip textured finish option and trim items including bullnose, cove molding and glazed edge tile provide a beautifully tailored effect.

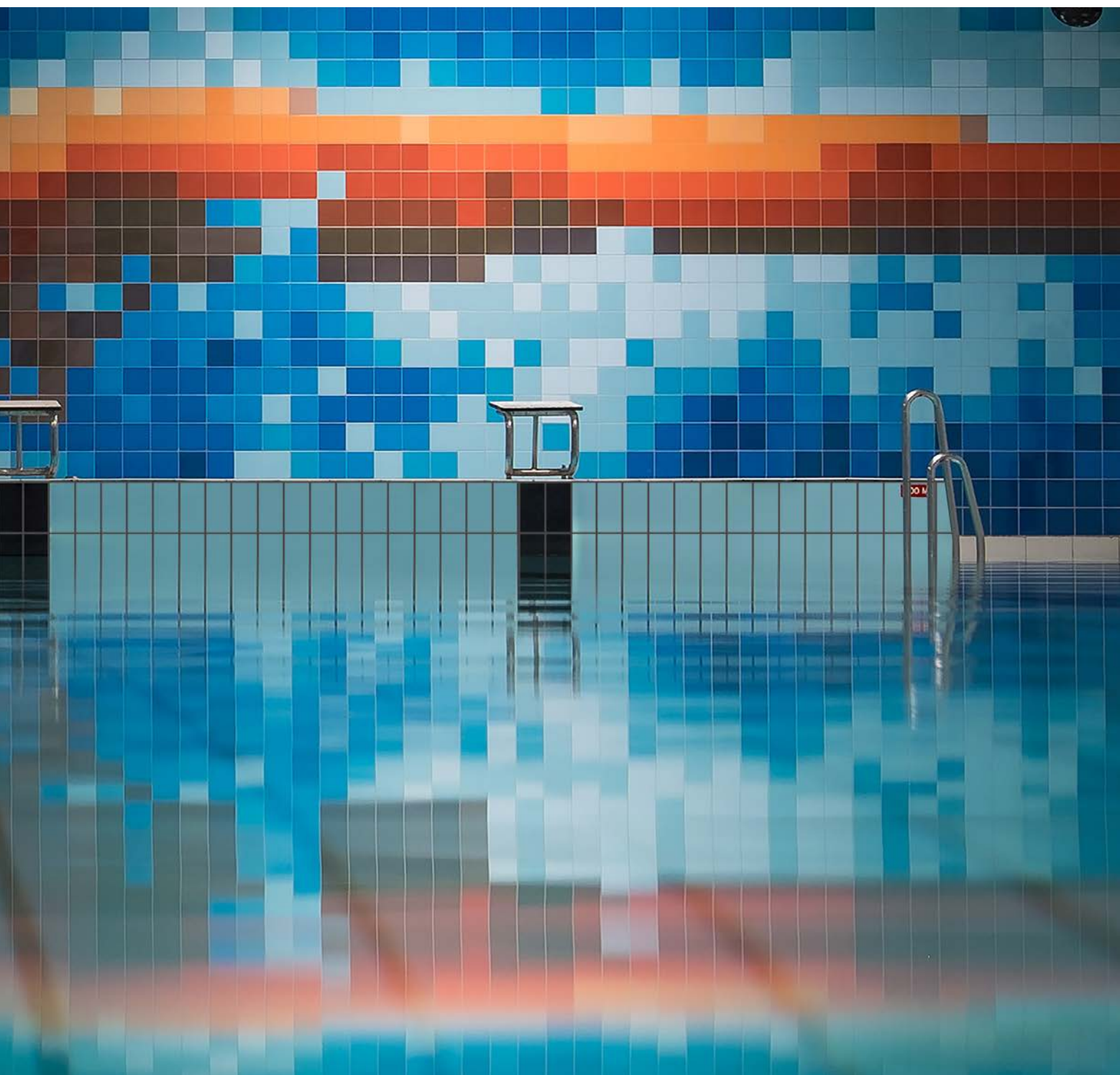






With Mosa, you can take a deep dive into design while using materials that hold up in wet environments. With hundreds of colors and myriad sizes in wall tile, and Mosa's online pattern generator, the design possibilities are endless.









MIT  
Cambridge, MA  
Core Collection Terra 206V

## Ivy

### Leagues ahead

In America and globally, leading architects and designers count on Mosa for important installations in the education sector, such as these at M.I.T. and Northwestern University, and others at Harvard, Yale and Princeton. The echelon of the projects in which Mosa is a key component is high because the innovation, design integrity and beauty of Mosa tile solves so many key concerns for specifiers. Beyond that, Mosa's deep commitment to service, including stocking tiles in a U.S. warehouse for impeccable on-time deliveries, technical support and superlative project management make it a trusted resource. For highlights of our notable education projects, please see the back cover of this brochure.





Northwestern University -  
Kellogg School of Management  
Evanston, IL  
Terra Maestricht 216V  
Terra Tones 216XYZV





Northwestern University -  
Kellogg School of Management  
Evanston, IL  
Terra Maestricht 216V  
Terra Tones 216XYZV

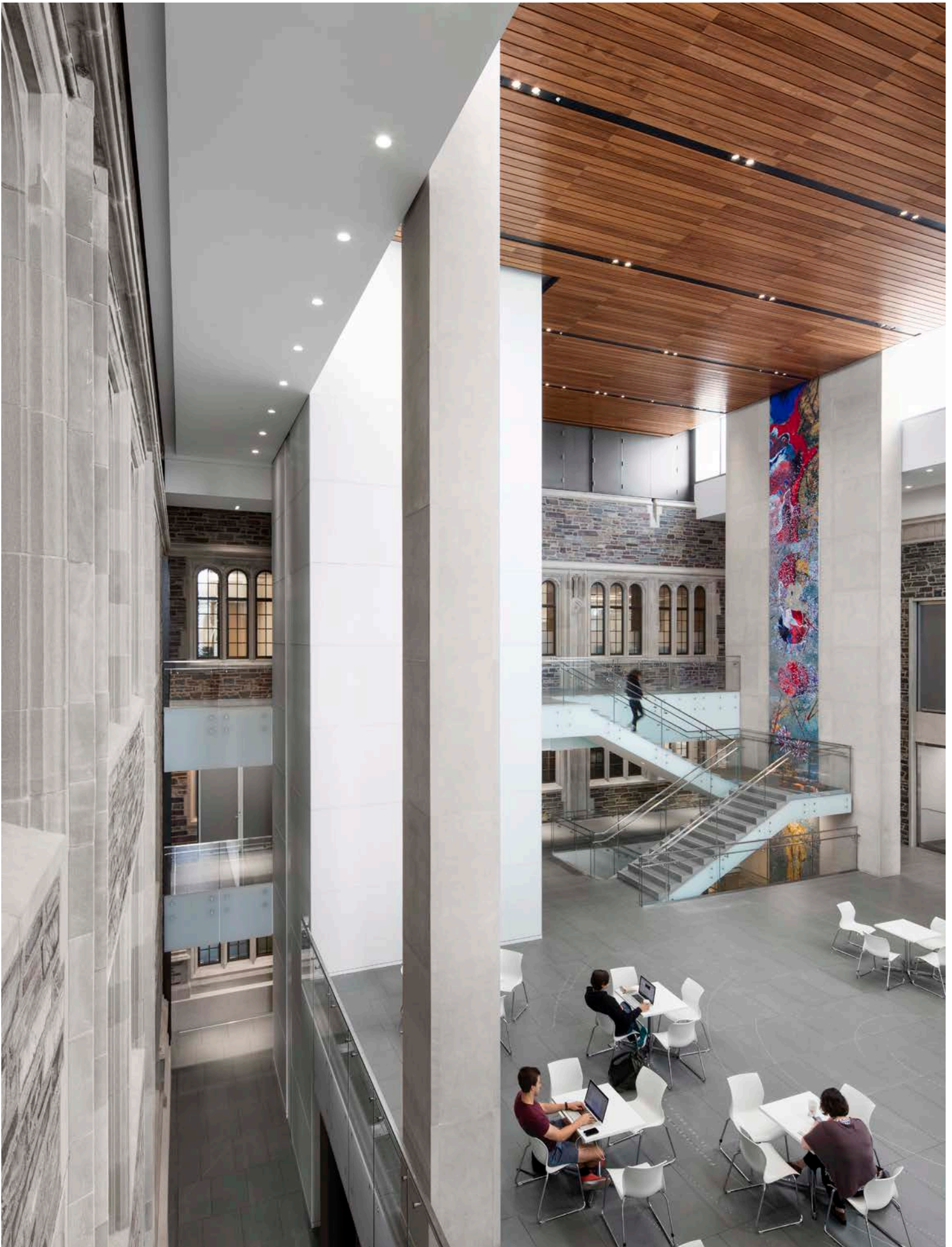






Princeton University  
Princeton, NJ  
Core Collection Terra 206V



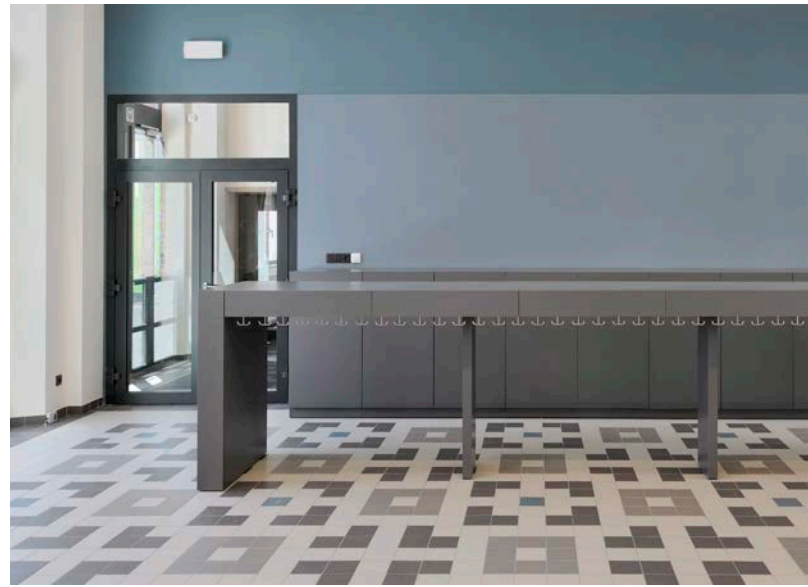




# By the numbers

**Mosa exceeds industry standards, ensuring your project endures beautifully.**

**Hoornbeek College**  
Rotterdam, the Netherlands  
Global Collection



**Heilige Familie Schaarbeek, Primary School**  
Schaarbeek, Belgium  
Global Collection 75030V / 75050V / 75100V

## Slip resistance

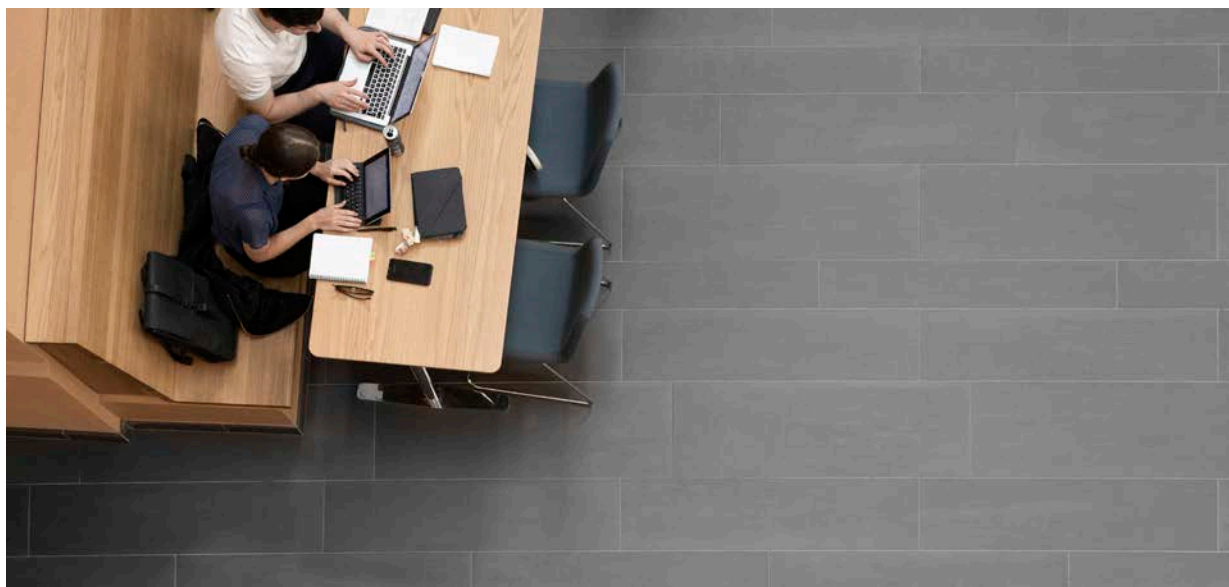
### Safety

According to the National Safety Council (NSC), over 9 million disabling slip-and-fall injuries occur every year in the USA alone. The annual direct cost of disabling occupational injuries due to slips, trips and falls is estimated to exceed \$11 billion. When it comes to flooring, the type of mishap of greatest concern slipping, tripping and falls on the same level, rather than falls from one level to another. Mosa saves your client from worry.

With the application of Mosa's state-of-the-art technologies in porcelain tile manufacturing, tile is available to architects that exceeds the minimums for slip resistance, offering even more assurance against costly accidents.

**Industry standard: .42 DCOF**

**Mosa standard: .70 DCOF**



**Campus US University Linköping**  
Linköping, Sweden  
Core Collection Terra 216V

## Breaking strength

### Maintenance concerns

Foot traffic in many areas is not the only concern. Consider how maintenance will be performed in multi-level or high-ceilinged areas, for tasks such as window washing which often can involve heavy equipment or even vehicular traffic. Mosa's superior strength makes maintenance concerns practically vanish.

**Industry standard: 250 lbs**

**Mosa standard: Thickness  $\leq 0.4"$  > 400 lbs**

**Thickness > 0.4" > 700 lbs**

## Face dimension

### Horizontal Safety and Integrity

Dimensional consistency is key on floors for safety reasons, and lack of integrity here can be a gateway to more serious product failures down the road.

### Vertical beauty

Shadows and lippage on walls impact the beauty of important designs. The nature of porcelain is that some warping is inevitable, but Mosa's exacting quality control allows for less warping in rectified porcelain than the industry standard.

**Industry standard: (Face dimension; rectified):**  
**+/- 0.03"**

**Mosa standard: (Face dimension; rectified):**  
**+/- 0.012"**

**Industry standard: (Warpage; rectified): +/- 0.07"**  
**Mosa standard: (Warpage; rectified): +/- 0.06"**

## Abrasion resistance

Flooring in education facilities must endure over time, often for decades. Sourcing porcelain that is wear-resistant is key to satisfying this requirement. Whether the concern is chair-drag, public high traffic areas or stair treads, using Mosa will mean a worry-free installation because Mosa allows far less depth of abrasion than the standard:

**Industry standard:  $\leq 175 \text{ mm}^3$**

**Mosa standard: < 100  $\text{mm}^3$**



# Service and support

## Dedicated people

### People make Mosa

This is clear from the smart design of our tiles and our services. Our employees and partners are active worldwide, in locations providing advice and in points of sale for a wide range of clients: designers, architects, commissioning parties, and consumers amongst others. They are all specialists who would be delighted to inform and advise you on the many possible uses of ceramic tiles in your project.

### Customer Care and project advisers

We set high standards for the advice and support provided to our clients. This means that we actively aim for dialogue and that we are interested in what interests you. This forms the basis for good cooperation. We are happy to contribute ideas and suggestions to make things as easy as possible for you. We are a partner, from the beginning to the end of the building process. Our Customer Care employees and your project adviser are always ready to assist you.

[mosa.com/contact](https://mosa.com/contact)

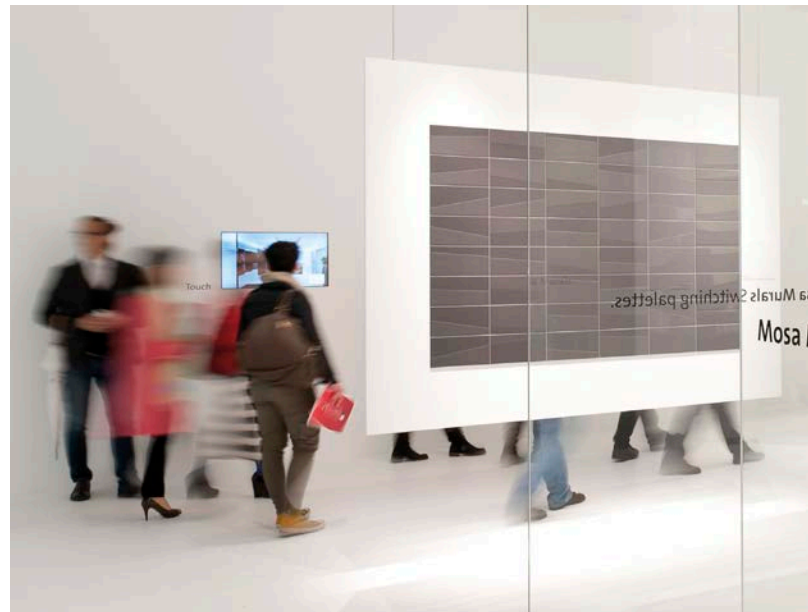
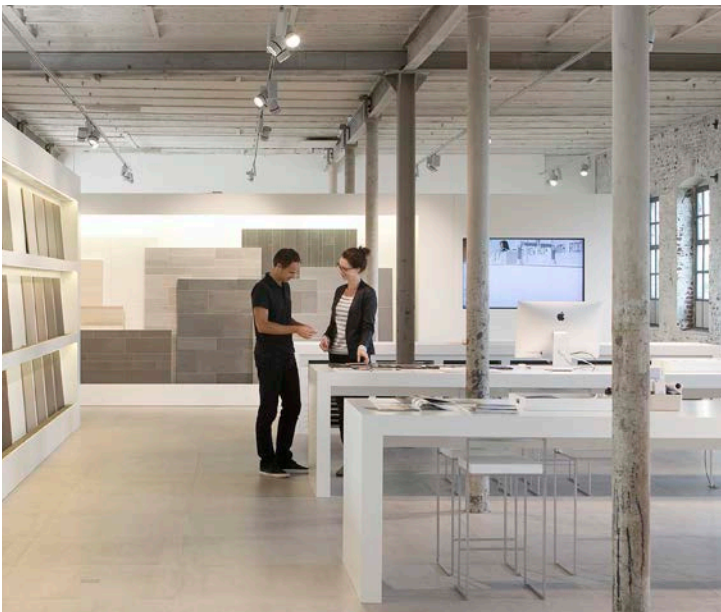
## Dedicated partners

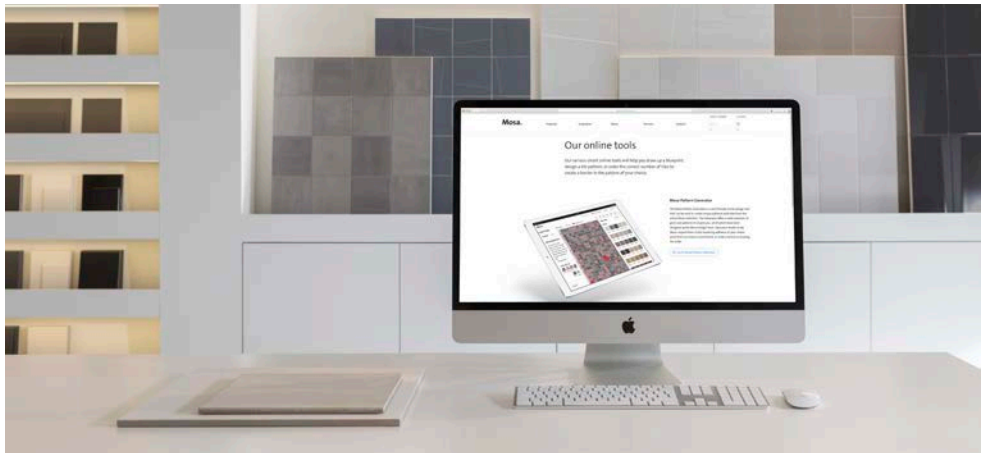
### Mosa showrooms and distributors

Mosa has its own showrooms in Maastricht, Amsterdam, Frankfurt, and London, especially for designers, architects, and commissioning parties. At these showrooms, you can see and touch the entire tile collection for walls, floors, facades, and terraces. To this end, you can also turn to our selected distributors worldwide. We are ready to assist you, offering personal advice on the application of our products and services. You can find a showroom or distributor near you via our website.

### Network of dedicated partners

Mosa has distribution centers in Europe and North America and supplies identical tile concepts worldwide. Thanks to a network of dedicated partners, our tiles can be purchased for spaces on various continents and also be delivered quickly. As all the logistical elements are closely linked with each other, your wishes form the central focus throughout the process.





## Digital tools

### Pattern Generator

The Pattern Generator allows you to create endless variations with patterns for walls and floors. Once you have chosen a pattern, the tool calculates the exact number of tiles required. It also automatically generates a working drawing with instructions for the tiler. The Pattern Generator allows a free choice from all possible formats, grids, textures, and colors that can then be exported to SketchUp, AutoCAD, Revit, and BIM. You can find the Pattern Generator on our website.

### Data selection tool

Mosa provides product information for 2D and 3D design software in a variety of formats. By means of wizard, we can help you quickly find the product information for your chosen product in the right format. This means that the information can be directly converted to DWG, IFC, JPEG, DXF, or PAT, and indirectly to RVT. The wizard allows you to download the desired information; you can then simply import it into your software package.

### Digital specification service

Mosa offers a local digital specification service for all products from the collection. This allows you to quickly find the full specification details for all series. The format and content of the descriptions vary per country. You can easily add the required description to your specifications.

## Always inspired

### Mosa Magazine

Via our online blog, Mosa Magazine, we inform you of developments in the field of ceramic tiles, construction, and architecture. Here you can find tips for the installation of ceramic tiles, our vision of sustainability, an explanation of the properties of ceramic, building regulations, and examples of the use of our tiles series in international projects, amongst other information.

### References and case studies

We like to inspire through our tiles. We are therefore constantly collecting examples of international projects in which our series have been incorporated. We regularly single out a reference as a case study. We enter into dialogue with the architect, designer, or user of a space regarding their reasons for choosing Mosa. These references and case studies can be found on our website.

### Social media

For inspiration, reference projects, news, and events, you can follow us via social media. You can find us on Facebook, Twitter, LinkedIn, Instagram, Pinterest, and various other channels. Choose your favourite channel and be kept updated on architecture and ceramic tiles.

**[magazine.mosa.com](http://magazine.mosa.com)**



**[facebook.com/mosatilesusa](https://facebook.com/mosatilesusa)**



**[twitter.com/mosatiles](https://twitter.com/mosatiles)**



**[linkedin.com/company/royal-mosa](https://linkedin.com/company/royal-mosa)**



**[instagram.com/mosatiles](https://instagram.com/mosatiles)**



**[pinterest.com/mosatiles](https://pinterest.com/mosatiles)**





# Esteemed institutions

## Mosa USA's recent notable education projects include:

Ball State University – Applied Technology Building  
Bank Street College of Education  
Canisius College – Science Hall  
Carnegie Mellon – Cohon Center  
Champlain College  
Colorado State University – Department of Chemistry Building  
Duke University – Wannamaker House  
Fairfield University  
Gateway Headstart  
Gonzaga University – Student Union  
Harvard University – Bright Arena  
Harvard University – Innovation Lab  
Harvard University – LOEB Drama Center  
Harvard University – School of Engineering  
Horace Mann Elementary School  
Ivy Tech Community College of Indiana  
Massachusetts Institute of Technology – Building 52  
Northwestern University – Kellogg School of Management  
Ohio State University – Oxley Hall  
Princeton University  
Ohio University – McCracken Hall  
Rice University – Moody Center for the Arts  
Rutgers University – Life Sciences Center  
Rutgers University – School of Nursing & Science Building  
Seton Hall – Richie Regan Athletic Center, Walsh Gym  
Saint Vincent Martyr School  
St. Hilda's & St. Hugh's Lower School  
St. John's University  
State University of Syracuse – BAC Lab  
The Catholic University of America  
The City University of New York – School of Public Health  
University of Arizona  
University of Central Florida  
University of Connecticut  
University of Georgia – Stadium SkyClub  
University of Michigan – Ross Business School  
University of Nebraska – Baxter Hockey Arena  
University of Nebraska – Brace Hall  
University of North Texas – Student Union  
University of South Carolina – Darla Moore School of Business  
University of Southern California – Fertitta Hall  
University of Southern California – Social Sciences Building  
University of Texas – Health Science Center at San Antonio  
University of Washington Tacoma – Urban Solutions Center  
Wright State University  
Xaverian High School  
Yale University – School of Management  
Yale University – Graduate Housing (Esplanade Apartments)

Muncie, IN  
New York, NY  
Buffalo, NY  
Pittsburgh, PA  
Burlington, VT  
Fort Collins, CO  
Durham, NC  
Fairfield, CT  
Atlantic City, NJ  
Spokane, WA  
Cambridge, MA  
Cambridge, MA  
Cambridge, MA  
Boston, MA  
St. Paul, MN  
Indianapolis, IN  
Cambridge, MA  
Evanston, IL  
Columbus, OH  
Princeton, New Jersey  
Athens, OH  
Houston, TX  
New Brunswick, NJ  
New Brunswick, NJ  
South Orange, NJ  
Madison, NJ  
New York, NY  
Jamaica, NY  
Syracuse, NY  
Washington, DC  
New York, NY  
Tucson, AZ  
Orlando, FL  
Storrs, CT  
Athens, GA  
Ann Arbor, MI  
Lincoln, NE  
Lincoln, NE  
Denton, TX  
Columbia, SC  
Los Angeles, CA  
Los Angeles, CA  
San Antonio, TX  
Tacoma, WA  
Dayton, OH  
Brooklyn, NY  
New Haven, CT  
New Haven, CT

BSA Life Structures  
Perkins + Will  
CannonDesign  
CannonDesign  
Christine Burdick Design  
Hord Coplan Macht  
Einhorn Yaffee Prescott  
Newman Architects  
City Invincible Architecture  
Obsis Architecture  
Architectural Resources of Cambridge  
Shepley Bulfinch  
Bergmeyer Associates Inc.  
Behnisch Architekten  
Miller Dunwiddie Architecture  
Schmidt Associates  
Beyer Blinder Belle  
KPMB Architects  
KZF Design Inc.  
KPMB Architects  
Champlin Architecture  
Michael Maltzan Architecture  
CannonDesign  
Perkins Eastman  
KSS Architects Solutions Architecture Corp.  
Studio 1200  
Murphy Burnham & Buttrick  
Perkins + Will  
SLAM Collaborative Boston  
Cox Graae & Spack Architects  
Tuller McNealus Feld  
STG Design  
Sixthriver Architects  
Newman Architects  
Cooper Carry Inc.  
Kohn Pedersen Fox  
Perkins+Will  
Leo A. Daly  
Perkins+Will  
Rafael Vinoly  
AC Martin – Los Angeles  
HKS – Los Angeles  
Munoz & Company  
Miller Hull Partnership  
H3 Hardy Collaboration  
Perkins Eastman  
Foster+Partners  
KG&D Architects

For more project inspiration visit [mosa.com/education](https://mosa.com/education)





#### Learn more

Our relationships with design professionals are the keys to these beautiful, enduring, important projects with our tile. Please let us know how we may be of service.

[mosa.com/contact](https://mosa.com/contact)

# EVERGREEN BY DEBRA, LLC

- *Ceramic & Glass Tile* • *Art Images in Hard Surfaces*
- *100% Permeable Pavers* • *Planters*



**Woman Owned Small Business  
Certified DBE**

47-388 Kamehameha Hwy  
Kaneohe, HI 96744-4736 USA  
Ph 808-239-6599 Fax 808-239-8556

[EvergreenbyDebra.com](https://EvergreenbyDebra.com)

# Mosa.

Mosa USA Inc

c/o

3340 Capital Court

N. Charleston, SC 29418

[info@mosa.com](mailto:info@mosa.com)

[www.mosa.com](https://www.mosa.com)