

TerraCast[®]

PRODUCTS

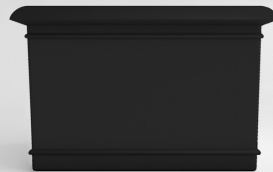
Distributor Hawaii & Guam
EVERGREEN BY DEBRA, LLC
• Ceramic & Glass Tile • Art Images in Hard Surfaces
• Planters in Ceramic & Fiberglass • Diamond Tools
**Woman Owned Small Business
Certified DBE**
47-388 Kamehameha Hwy
Kaneohe, HI 96744-4736 USA
Ph 808-239-6599 Fax 808-239-8556
EvergreenbyDebra.com

PLANTER PRODUCTS CATALOG

**INNOVATIVE.
ENDURING.
STRONG.**



**MODERN
DESIGNED
COLORS &
STYLES**



**VERSATILE
PRODUCTS
PROVIDING
CUSTOMIZED
INSTALLATIONS**



Innovation With **Resin Based** Commercial Outdoor Products



TerraCast[®]

THE LEADER IN OUTDOOR RESIN MADE PRODUCTS

As an American owned and operated company, we use environmentally friendly materials and practices. One of our environmentally friendly materials is the unique resin-blend that we use to create our eco-friendly products. As the leading manufacturer and vendor of roto-molded planter pots and the only manufacturer of our proprietary, true composite PolySteel[®] lamp posts in the world, we are committed to the health and well being of the economy, the planet, and the future.

With the use of resin and PolySteel[®], we offer products that are up to 75% lighter than traditional planters and lamp posts, virtually indestructible, maintenance-free and cost-effective. We have the perfect solutions for you no matter how big or small your project is. Our fully customizable products will fit the needs of your business to a “T”.

- 3** Bamboo
Barrel
Bowl Vase
Brickell
Catalina
Fluted Vase
- 5** Californian
Contemporary
Garland Rolled Rim
Garland Rectangular
- 7** Grooved
Half Round
Japanese Bowl
Low Bowl
Oil Jar
- 11** Quarter Circle
Rectangular
Roma Rectangular
Round Pedestal
San Juan Short
San Juan Tall
- 13** Square Footed
Square Pedestal
Step
Straight Sided
Vase Rolled Rim
- 14** Brooklyn Planter
- 15** Cabana Planter
Grecian Round
Grecian Square
Leaf Planter
Roman Round
Roman Square
Tree Relief Planter
- 16** Branded
Products
- 17** Self Watering Systems
- 18** Why TerraCast®?
Family of Products

COLOR KEY:

To see our updated colors - please visit our website at
WWW.TERRACASTPRODUCTS.COM

If color is crucial - please request a color chip for a more
detailed view.

	Ash Granite		Black		Blue Granite
	Charcoal		Coco Brown		Concrete
	Dark Brown		Evergreen		Fire Yellow
	Green		Indian Sandstone Granite		Light Blue
	Light Grey		Mexican Chili		Orange
	Pistachio		Red		Sandstone Granite
	Terracotta		Tuscan Sun		Verdi Granite
	Victorian Lace		White		Wine

Please note that the colors on the color key and throughout this catalog are represented using the 4 color printing process. This process is limited in its authentication of actual hue. Although every effort was consorted to make the colors as realistic as possible, they are not exact. If tints and shades are critical, we recommend that sample chips produced from actual material be sent by TerraCast® Products.

TerraCast® Products is not responsible for typographical errors. Measurements in this catalog are rounded to the nearest quarter inch and may not be exact due to manufacturing variances.



Featured Image : TCG-6 Barrel Vase Planter in Monzonite Granite, Location: White Lake, MI.
Top Image : TCF2M-24 in Terracotta. Middle Image : TBR-22 in Cobalt. Bottom Image : TRP-40 in Ash Granite.

BAMBOO

Holistic Asian garden design, with round, cylindrical, fluted, tapered design.



*For color names and clarification, please refer to PAGE 1 or visit WWW.TERRACASTPRODUCTS.COM

MODEL #	TOP(OD)	TOP(ID)	BASE(ID)	HT.	WT(LB.)
TCJ-4	23"	20"	14"	20"	9

BARREL

Round, cylindrical, tapered design that is great for decorative plants or small trees depending on size.



*For color names and clarification, please refer to PAGE 1 or visit WWW.TERRACASTPRODUCTS.COM

MODEL #	TOP(OD)	TOP(ID)	BASE(ID)	HT.	WT(LB.)
TCG-5	21"	18"	13"	16"	13
TCG-6	25"	22"	15"	21"	14
TCG-10	28"	24"	17"	23"	20

BOWL VASE

Great compliment to Vase and Garland Planters with its round, rolled rim, cylindrical, low profile design.



*For color names and clarification, please refer to PAGE 1 or visit WWW.TERRACASTPRODUCTS.COM

MODEL #	TOP(OD)	TOP(ID)	BASE(ID)	HT.	WT(LB.)
TCF2M-14	15"	13"	10"	7"	4
TCF2M-18	20"	17"	14"	8"	7
TCF2M-24	25"	22"	18"	11"	13
TCF2M-28	33"	29"	22"	14"	18
TCF2M-32	35"	31"	23"	16"	24

BRICKELL

Sleek, sharp, tapered straight lines creating a chic design that offers a wide array of options.



*For color names and clarification, please refer to PAGE 1 or visit WWW.TERRACASTPRODUCTS.COM

MODEL #	TOP(OD)	TOP(ID)	HT.	BASE(ID)	WT(LB.)
TBR-15	15.25" sq.	11"	18.25"	9"	8
TBR-17	17.25" sq.	13.5"	20.25"	10.25"	12
TBR-22	22.5" sq.	18"	26.75"	13.5"	21
TBR-25	25.5" sq.	20.5"	36"	14.25"	28

CATALINA

Similar look to Californian style planter, but in rectangular shape. Used as outdoor cafe separation and decoration.

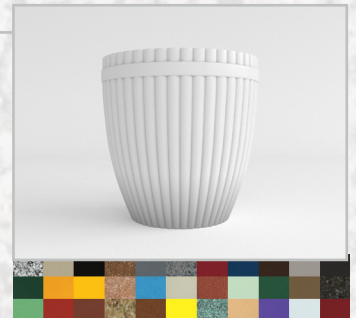


*For color names and clarification, please refer to PAGE 1 or visit WWW.TERRACASTPRODUCTS.COM

MODEL #	TOP(OD)	TOP(ID)	BASE(ID)	HT.	WT(LB.)
TRP-40	40"x30"	30"x20"	33"x23"	30"	45

FLUTED

Compliments the Bamboo and Grooved Planter with a round, fluted, tapered design.



*For color names and clarification, please refer to PAGE 1 or visit WWW.TERRACASTPRODUCTS.COM

MODEL #	TOP(OD)	TOP(ID)	BASE(ID)	HT.	WT(LB.)
TCH-20	18"	16"	9"	18"	8



Featured Image : TCB-8 Californian Planter in Sandstone Granite, Location: Apple Valley, MN.
Top Image : TCN-48 and TCN-40 in Terracotta. Middle Image : TCB-11 in Mocha. Bottom Image : TCB-10 in Verdi Granite.

CALIFORNIAN

The rugged oversized lip design is a popular choice for municipalities and parks across the country. This muscle planter balances a bold look and soft lines to enhance installations.



*For color names and clarification, please refer to PAGE 1 or visit WWW.TERRACASTPRODUCTS.COM

MODEL #	TOP(OD)	TOP(ID)	HT.	WT(LB.)
TCB-1	25"	17"	12"	13
TCB-2	23"	13"	16"	19
TCB-3	23"	12"	22"	21
TCB-4	35"	26"	12"	25
TCB-5	35"	26"	18"	30
TCB-6	35"	26"	22"	37
TCB-7	35"	21"	30"	41
TCB-8	46"	33"	30"	57
TCB-9	60"	46"	30"	68
TCB-10	60"	44"	36"	75
TCB-11	23"sq.	12"	22"	25
TCB-12	35"sq.	21"	29"	55
TCB-TC	30"	12"	36"	25

CONTEMPORARY

A popular design for indoor/outdoor malls. It's soft and smooth curves make a mainstream design choice.



*For color names and clarification, please refer to PAGE 1 or visit WWW.TERRACASTPRODUCTS.COM

MODEL #	TOP(OD)	TOP(ID)	HT.	WT(LB.)
TCN-10	17"	12"	23"	11
TCN-10A	Aluminum Trash/Ash Tray for TCN-10			
TCN-20	24"	20"	35"	27
TCN-20A	Aluminum Trash/Ash Tray for TCN-20			
TCN-20L	Inner Liner for TCN-20 39 Gallons			
TCN-TP 24	Terrapin Top for TCN-20			
TCN-24	23"	18"	20"	16
TCN-30	29"	23"	23"	24
TCN-40	40"	34"	25"	45
TCN-48	48"	38"	30"	62
TCN-49	46"	37"	18"	40
TCN-60	60"	48"	42"	100

GARLAND ROLLED RIM

Detailed garland accents this traditional Italian staple. Rolled rim and tapered design make this a popular choice.



*For color names and clarification, please refer to PAGE 1 or visit WWW.TERRACASTPRODUCTS.COM

MODEL #	TOP(OD)	TOP(ID)	BASE(ID)	HT.	WT(LB.)
TCM-24	26"	23"	14"	21"	14
TCM-28	30"	27"	16"	25"	27
TCM-32	34"	31"	19"	27"	29
TCM-36	38"	34"	20"	29"	35
TCM-40	42"	38"	22"	33"	44

GARLAND RECTANGULAR

Decorative bold lip and traditional Italian garland design define this industry favorite.



*For color names and clarification, please refer to PAGE 1 or visit WWW.TERRACASTPRODUCTS.COM

MODEL #	L	W	HT.	WT(LB.)
TGR-1	28"	14"	12"	9
TGR-3	32"	15.5"	13"	14
TGR-5	36"	17"	14"	23
TGR-7	40"	18"	16"	27



ALL **TerraCast**® PLANTERS ARE
LIGHTWEIGHT & INDESTRUCTIBLE!



Featured Image: TNF-60 Brooklyn Planter in Concrete, Location: Brooklyn, NY
Top Image: TJP-30 in Charcoal. Middle Image: TCL-3 in White. Bottom Image: TCC-1 in Terracotta

GROOVED

Compliment to the Bamboo Planter and Fluted Vase Planter with its round, cylindrical, grooved design.



*For color names and clarification, please refer to PAGE 1 or visit WWW.TERRACASTPRODUCTS.COM

MODEL #	TOP(OD)	TOP(ID)	BASE (ID)	HT.	WT(LB.)
TCL-3	13"	22"	10"	16"	9

HALF ROUND

The Mediterranean rolled rim design on this Half Round planter allows layouts around walls, furniture and in combinations to create full circles. Available with and without garland.

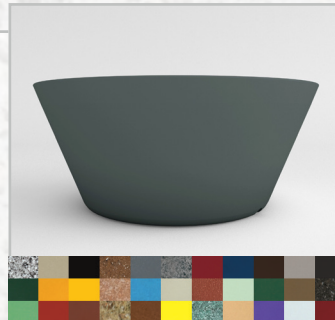


*For color names and clarification, please refer to PAGE 1 or visit WWW.TERRACASTPRODUCTS.COM

MODEL #	OPENING	WIDTH	DEPTH	HT.	WT(LB.)
THR-1	20" X 10"	23.5"	12.5"	23"	12
THR-1G	20" X 10"	23.5"	12.5"	23"	12 (garland)

JAPANESE BOWL

A Japanese theme with a round, tapered design.



*For color names and clarification, please refer to PAGE 1 or visit WWW.TERRACASTPRODUCTS.COM

MODEL #	TOP(OD)	TOP(ID)	BASE (ID)	HT.	WT(LB.)
TJP-30	33"	29"	22"	14"	18

LOW BOWL

Versatile usability; round and cylindrical design. A popular design in many different applications.



*For color names and clarification, please refer to PAGE 1 or visit WWW.TERRACASTPRODUCTS.COM

MODEL #	TOP(OD)	TOP(ID)	HT.	WT(LB.)
TCC-1	24"	22"	8"	8
TCC-3	37"	35"	10"	18
TCC-5	43"	41"	12"	22

OIL JAR

This classic style is used both vertically and horizontally. Beautiful Italian details of handles and swirls define this architectural accessory. Available in two sizes to create high-low and large-small effects.



*For color names and clarification, please refer to PAGE 1 or visit WWW.TERRACASTPRODUCTS.COM

MODEL #	OPENING	HT.	DIA.	WT(LB.)
TCO-3	11"	27"	20"	12
TCO-7	14"	33"	33"	18



ALL **TerraCast**[®]
PLANTERS ARE
ECO-FRIENDLY!



TerraCast[®] IN NYC

Our planters can be seen throughout New York City, with spectacular installations in noteworthy locations such as Times Square, Herald Square and in the Flatiron District.

We are a proud vendor of the New York City's Department of Transportation. As seen here, our Step Planters and Vase Planters are used as a decorative border, creating a safety barrier for New York's pedestrians and auto traffic.



QUARTER CIRCLE PLANTERS

Molded of the same durable one piece construction that TerraCast® has built its reputation on, the Quarter Circle Planter is the most VERSATILE planter TerraCast® has ever offered.

QUARTER PLANTER OPTION

(ONE PLANTER)

USE TWO PLANTERS TO GET A
HALF CIRCLE EFFECT!

46"L x 29"W x 18"H

WT. 33 (LB.)

FULL CIRCLE OPTION

(FOUR PLANTERS)

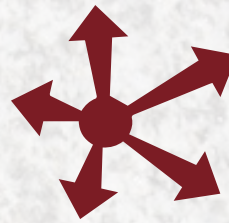
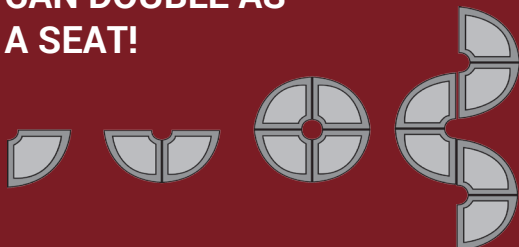
DIA. 65.5" outside | 12" inner circle

WT. 132 (LB.)

SNAKE OPTION

(UNLIMITED PLANTERS)

QUARTER CIRCLE PLANTERS
CAN DOUBLE AS
A SEAT!



**TerraCast®'S MOST
VERSATILE PRODUCT
IN THE LINE!**



QUARTER CIRCLE

The most versatile planter in the line. Create quarter circles, rounds and half rounds. Creates a 65.5 in. full circle.

Featured on page 10.



*For color names and clarification, please refer to PAGE 1 or visit WWW.TERRACASTPRODUCTS.COM

MODEL #	LENGTH	WIDTH	HT.	WT(LB.)
QCP-1	46"	29"	18"	33

RECTANGULAR

Rectangular Planters are a great addition to any walkway, garden, or terrace. This family of rectangles has a rolled rim and decorative ribbing for a classic look.



*For color names and clarification, please refer to PAGE 1 or visit WWW.TERRACASTPRODUCTS.COM

MODEL #	LENGTH	WIDTH	HT.	WT(LB.)
TCA-1	19.5"	10.5"	11"	7
TCA-3	31"	13.5"	13.5"	14
TCA-5	38"	15"	13.5"	18

ROMA RECTANGULAR

Impressive pedestal style, rectangular planter that really drives the Italian theme. Available with or without garland.

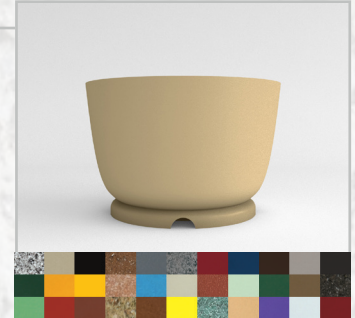


*For color names and clarification, please refer to PAGE 1 or visit WWW.TERRACASTPRODUCTS.COM

MODEL #	OUTSIDE(LWH)	INSIDE(LWH)	WT(LB.)
TCR-1 (garland)	49.25"x19.25"x19"	46"x16"x19"	28
TCR-2 (plain)	49.25"x19.25"x19"	46"x16"x19"	28

ROUND PEDESTAL

Impressive, pedestal style planter that can be used to accentuate fence lines or gardens. Also great on golf courses or at country clubs.



*For color names and clarification, please refer to PAGE 1 or visit WWW.TERRACASTPRODUCTS.COM

MODEL #	TOP(OD)	TOP(ID)	HT.	BASE (ID)	WT(LB.)
TCP-36	36"	30"	24"	27"	35

SAN JUAN SHORT

When used in conjunction with the San Juan tall, this 12" high planter creates a dramatic high-low effect in courtyards or on streetscapes.



*For color names and clarification, please refer to PAGE 1 or visit WWW.TERRACASTPRODUCTS.COM

MODEL #	HT.	DIA.	OPENING	WT(LB.)
TCSB-2	12"	36"	25"	19

SAN JUAN TALL

Classic design that can be coupled with the smaller Oil Jar, or the San Juan planters.



*For color names and clarification, please refer to PAGE 1 or visit WWW.TERRACASTPRODUCTS.COM

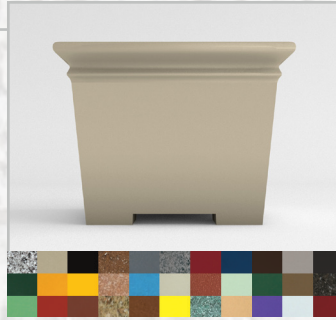
MODEL #	HT.	DIA.	OPENING	WT(LB.)
TCSB-1	30"	36"	25"	35



Featured Image : TCP-48 Square Pedestal Planter in Black, Location: O'Fallon, IL.
Top Image : TCE-7 in Dark Brown. Middle Image : TCP-48 in Terracotta. Bottom Image : TDC-5 in White.

SQUARE FOOTED

Easy for placement between furniture with its contemporary square design.



*For color names and clarification, please refer to PAGE 1 or visit WWW.TERRACASTPRODUCTS.COM

MODEL #	TOP(OD)	TOP(ID)	BASE (ID)	HT.	WT(LB.)
TCE-1	17" sq.	13"	12"	15"	10
TCE-3	20" sq.	16"	16"	18"	17
TCE-5	24" sq.	20"	19"	24"	23
TCE-7	29" sq.	25"	24"	26"	27

STEP

Eye-popping ridge design, commonly used outdoors as a planter and a barrier.



*For color names and clarification, please refer to PAGE 1 or visit WWW.TERRACASTPRODUCTS.COM

MODEL #	TOP(OD)	TOP(ID)	BASE (ID)	HT.	WT(LB.)
TSP-32	34"	31"	19"	27"	29
TSP-40	42"	38"	22"	33"	44

VASE ROLLED RIM

Classic Italian style Vase Planters are the most common type of planters seen in public. A traditional rolled rim design helps this pot maintain its timeless look.

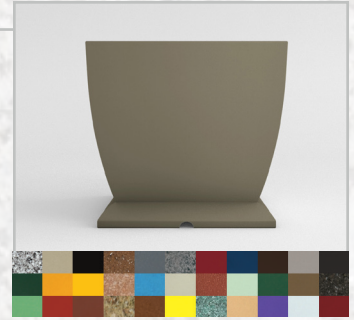


*For color names and clarification, please refer to PAGE 1 or visit WWW.TERRACASTPRODUCTS.COM

MODEL #	TOP(OD)	TOP(ID)	BASE (ID)	HT.	WT(LB.)
TC2-14	16"	13"	9"	14"	5
TC2-20	21"	19"	11.5"	17.5"	9
TC2-24	26"	23"	14"	21.25"	14.5
TC2-26	28.5"	25"	15.25"	23.5"	23
TC2-28	30.5"	27"	16.25"	24.5"	27
TC2-32	34"	31"	18.75"	27"	29
TC2-36	38"	34"	20"	29"	35.5
TC2-40	42.5"	38"	21.75"	33.25"	44
TC2-56	56"	52"	31"	41"	70

SQUARE PEDESTAL

A solution of gargantuan proportions, when a tall and large diameter is required with soft square lines.



*For color names and clarification, please refer to PAGE 1 or visit WWW.TERRACASTPRODUCTS.COM

MODEL #	TOP(OD)	TOP(ID)	BASE (ID)	HT.	WT(LB.)
TCP-48	48" sq.	42"	37"	36"	120

STRAIGHT SIDED

A simple rolled rim design, and one accentuating rim near the top of this planter make it ideal for graphics. This planter's limited taper makes its base outer diameter and top outer diameter nearly the same.



*For color names and clarification, please refer to PAGE 1 or visit WWW.TERRACASTPRODUCTS.COM

MODEL #	TOP(OD)	TOP(ID)	BASE (ID)	HT.	WT(LB.)
TDC-1	18"	15"	12"	11"	9
TDC-3	21"	18"	14"	14"	10
TDC-5	27"	23"	20"	18"	23
TDC-7	33"	28"	25"	22"	27



ALL **TerraCast**[®]
PLANTERS ARE
ECO-FRIENDLY!

NEW FOR 2019 AND 2020

BROOKLYN PLANTER



Practically refined, this substantial container is ideal for large trees or plants. Brilliantly combining a modern sloped lip at its wide mouth and a traditionally robust tapered body, the Brooklyn Planter offers a unique profile. Traditional from afar, modern at intimate distances.

MODEL #	TOP(OD)	TOP(ID)	BASE (ID)	HT.	WT(LB.)
TNF-60	60"	54"	48"	40"	100



*For color names and clarification, please refer to **PAGE 1** or visit **WWW.TERRACASTPRODUCTS.COM**

HARTFORD PLANTER



A versatile alternative to walls and rails, the Hartford was designed to segregate outdoor cafe spaces. It has a very similar look to our Californian and Catalina style. Similar to Catalina style, the top lip design comes to a point, allowing for a dramatic high/low spectacle for spectators when placed adjacent to each other. The main difference is the tapering design of the Catalina style, where Hartford planter is designed to have straight walls.

MODEL #	LENGTH	WIDTH	HEIGHT
THP-44	44"	44"	25"



*For color names and clarification, please refer to **PAGE 1** or visit **WWW.TERRACASTPRODUCTS.COM**

INTRODUCING: SUNSHINE SERIES

CABANA PEDISTAL

Mediterranean style pedestal bowls capture the original clay texture that were found in the Messinian era. The bold lip and secondary fluted crown make this pedestal style bowl a great accent for many designs. Comes in 18 1/2" diameter wide and 17" tall.



*For color names and clarification, please refer to PAGE 1 or visit WWW.TERRACASTPRODUCTS.COM

MODEL #	TOP(OD)	TOP(ID)	BASE (ID)	HT.	WT(LB.)
GV-19	18.5"	17"	8"	17"	10

GRECIAN ROUND

This soft and tapered planter is accented with bolded flutes and finished with paired upper lip designs. Original clay forms are replicated with modern materials to duplicate and protect this round, timeless, Grecian Planter. A good companion to the Grecian Square Planter. Comes in 21" diameter wide and 17" tall.

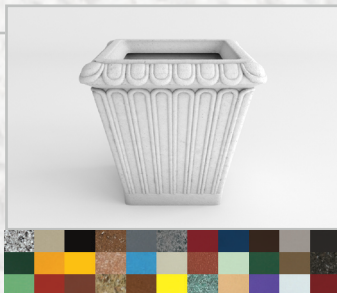


*For color names and clarification, please refer to PAGE 1 or visit WWW.TERRACASTPRODUCTS.COM

MODEL #	TOP(OD)	TOP(ID)	BASE (ID)	HT.	WT(LB.)
GA-21	21"	17"	13"	17"	9

GRECIAN SQUARE

A tender and tapered planter is accented with bolded flutes and finished with paired upper lip designs. Original clay forms are replicated with modern materials to duplicate and protect this square, timeless, Grecian Planter. A good companion to the Grecian Round Planter. Comes in 15.5" wide, 15.5" long and 14.75" tall.



*For color names and clarification, please refer to PAGE 1 or visit WWW.TERRACASTPRODUCTS.COM

MODEL #	TOP(OD)	TOP(ID)	BASE (ID)	HT.	WT(LB.)
GS-16	15.5"	12.75"	8.75"	14.75"	6

LEAF

This crisp and spring feel planter flourishes with billowed leaf patterns within the planter design which blend into the planter shape that is sure to draw attention and to entice cool, fresh emotions. Comes in 20" wide and 17" tall.



*For color names and clarification, please refer to PAGE 1 or visit WWW.TERRACASTPRODUCTS.COM

MODEL #	TOP(OD)	TOP(ID)	BASE (ID)	HT.	WT(LB.)
GW-21	20"	14.5"	10.5"	17"	11

ROMAN ROUND

A gallantly tapered and boldly fluted planter, the Roman Round Planter makes a masculine ensemble for many plants, bushes, and small trees. A good companion to the Roman Square Planter. Comes in 25" diameter wide and 21.5" tall.



*For color names and clarification, please refer to PAGE 1 or visit WWW.TERRACASTPRODUCTS.COM

MODEL #	TOP(OD)	TOP(ID)	BASE (ID)	HT.	WT(LB.)
GN-25	25"	18"	16"	21.5"	16

ROMAN SQUARE

Protruding bold flutes and a rotund top lip define this Roman Square Planter. This powerfully, robust tapered planter will draw attention to many layouts. A good companion to the Roman Round Planter. Comes in 20.5" wide and 16.75" tall.



*For color names and clarification, please refer to PAGE 1 or visit WWW.TERRACASTPRODUCTS.COM

MODEL #	TOP(OD)	TOP(ID)	BASE (ID)	HT.	WT(LB.)
GY-21	20.5"	12.5"	11.5"	16.75"	12

TREE RELIEF

This quadrate shaped vessel contains a serpentine tree motif that curiously adorns a corner and its sides. Clean corners add an elegance and flair to this simple yet timeless design. Comes in 17.5" wide, 17" long, and 16" tall.



*For color names and clarification, please refer to PAGE 1 or visit WWW.TERRACASTPRODUCTS.COM

MODEL #	TOP(OD)	TOP(ID)	BASE (ID)	HT.	WT(LB.)
GQ-17	17.5"x17"	13.5"x14"	13.5"x14"	16"	11

TerraCast®

BRAND YOUR CITY, PARK, BUSINESS OR PROJECT WITH CUSTOM GRAPHICS

We can create branded options for promotional products that are much more permanent than a banner, sign, pen or tote bag.

This is a unique opportunity to cast your brand onto a beautiful TerraCast® planter and set it into the design as a permanent fixture in the landscape or interiorscape of your project!



INTRODUCING: SELF WATERING SYSTEMS

Save time and money by utilizing TerraCast®'s self-watering system. Our reservoir uses a gravity-defying moisture wicking system, effectively and efficiently drawing water up to the roots. Prevent over-watering and reduce your watering cycles from days to weeks*. Our watering system provides 15% more water capacity compared to other brands. Made from the same durable LLDPE resin material our planters are made of, this reservoir is guaranteed to last significantly longer compared to other watering containers. Made in the USA. Ships within days. All reservoirs include watering tube and cap. Length of fill tube varies with the size of planters ordered, or indicate the length of tube.

**Many environmental factors effect watering cycles. Watering cycles may vary depending on the location.*



TC-REC3794

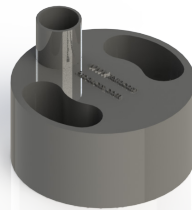
Our rectangular self-watering reservoir comes in a 37" long, 9" wide, and 4" tall. This model will fit any planter with the inside base length of 38" and above. Comes with a 1 1/2" diameter PVC pipe and cap. If you're considering which size you need, reference your planter's inside base length and width.



MODEL #	W x L	HEIGHT	NO. OF GALLONS
TC-REC3794	37" X 9"	4"	4.7

TC-WWR8

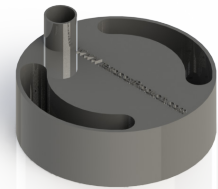
Our smallest self-watering reservoir comes in an 8" diameter and 4" tall. This model will fit any planter with the inside base diameter of 9" and above. Comes with a 1 1/2" diameter PVC pipe and cap. If you're considering which size you need, reference your planter's inside base diameter.



MODEL #	DIAMETER	HEIGHT	NO. OF GALLONS
TC-WWR8	8"	4"	.80

TC-WWR12

Our TC-WWR12 self-watering reservoir comes in an 12" diameter and 4" tall. This model will fit any planter with the inside base diameter of 13" and above.. Comes with a 1 1/2" diameter PVC pipe and cap. If you're considering which size you need, reference your planter's inside base diameter.



MODEL #	DIAMETER	HEIGHT	NO. OF GALLONS
TC-WWR12	12"	4"	1.90

TC-WWR14

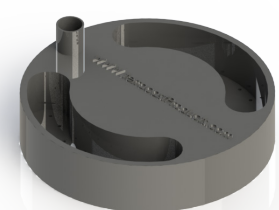
Our TC-WWR14 self-watering reservoir comes in an 14" diameter and 4" tall. This model will fit any planter with the inside base diameter of 15" and above.. Comes with a 1 1/2" diameter PVC pipe and cap. If you're considering which size you need, reference your planter's inside base diameter.



MODEL #	DIAMETER	HEIGHT	NO. OF GALLONS
TC-WWR14	14"	4"	2.50

TC-WWR18

Our TC-WWR18 self-watering reservoir comes in an 18" diameter and 4" tall. This model will fit any planter with the inside base diameter of 19" and above. Comes with a 1 1/2" diameter PVC pipe and cap. If you're considering which size you need, reference your planter's inside base diameter.



MODEL #	DIAMETER	HEIGHT	NO. OF GALLONS
TC-WWR18	18"	4"	4.25

WHY TerraCast® PLANTERS

All of our planters are made in America. Every single one of our offices, warehouses, facilities and factories stand proud on US soil. We craft our resin from a Linear Low Density Polyethylene that is up to 100% recycled and recyclable material. Our planters are made through a three-step process called rotational molding, or roto-molding, making our final product lighter and virtually indestructible.

TerraCast® planters come in a rainbow of solid colors, along with six proprietary faux-stone blends. We can match and design any color or texture for your resin products. One or two people can easily unload TerraCast® planters from the truck and move them to their destination on-site, saving on overall time and project costs. In the end, your decision to buy with TerraCast® will save you money, fuel the American economy, protect the environment, and help to save the world.

 **LESS EXPENSIVE**

 **LIGHT-WEIGHT**

 **INDESTRUCTIBLE**

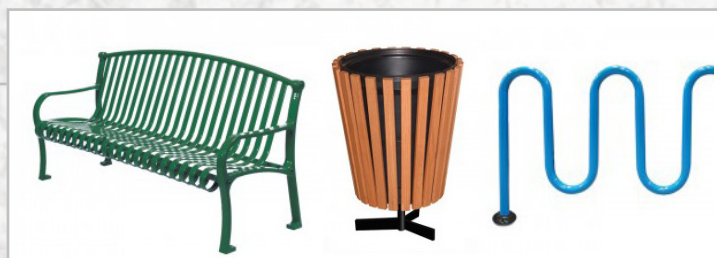
 **ECO-FRIENDLY**

 **FADE RESISTANT**

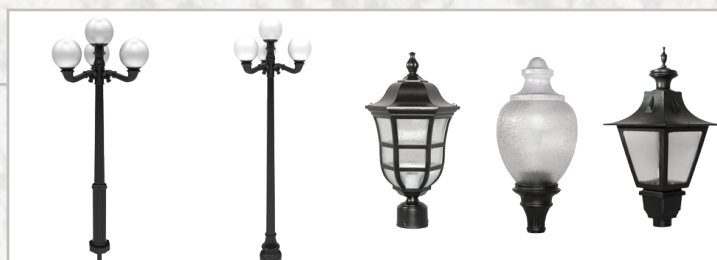
 **MADE IN THE USA**

FAMILY OF PRODUCTS

SITE FURNISHINGS



TERRACAST® LIGHTING



INNOVATIVE. ENDURING. STRONG.

TerraCast[®]

PRODUCTS

Distributor Hawaii & Guam

EVERGREEN BY DEBRA, LLC

- Ceramic & Glass Tile • Art Images in Hard Surfaces
- Planters in Ceramic & Fiberglass • Diamond Tools



**Woman Owned Small Business
Certified DBE**

47-388 Kamehameha Hwy
Kaneohe, HI 96744-4736 USA
Ph 808-239-6599 Fax 808-239-8556

EvergreenbyDebra.com