



# HydroFlo

by Pacific Interlock Pavers

**SAVE THE WORLD. PAVE THE WORLD,  
with HydroFlo 100% Permeable Pavers!**



## EVERGREEN

BY DEBRA, LLC SINCE 1994

Distributors for Hawaii & Pacific Region  
[www.evergreenbydebra.com](http://www.evergreenbydebra.com) | p (808) 239-6599

# ... A major breakthrough in the preservation of our most valuable natural resource ... Water.

Pacific Interlock Pavers, Inc. created the HydroFlo (patented) Technology and is using it to manufacture the first and **ONLY** concrete permeable paver with up to **100% surface permeability** that is strong enough for both **pedestrian** and **vehicular** use.

## HydroFlo Pavers answer environmental needs...

National concerns about the **loss of ground water, erosion control** and **water retention** demands more of the paving industry.



## Directives, Programs & Plans:

- **USEPA** – United States Environmental Protection Agency
- **NPDES** – National Pollution Discharge Elimination System
- **SWRCB** – State Water Resource Control Board
- **RWQCB** – Regional Water Quality Control Board
- **SWPPP** – Storm Water Pollution Prevention Program
- **LEED**® – Leadership in Energy and Environmental Design  
HydroFlo™ contributes toward satisfying Credits under LEED.
- **LID Standards** – Low Impact Development
- **WPCP** – Water Pollution Control Program
- **BMP** – Best Management Practices

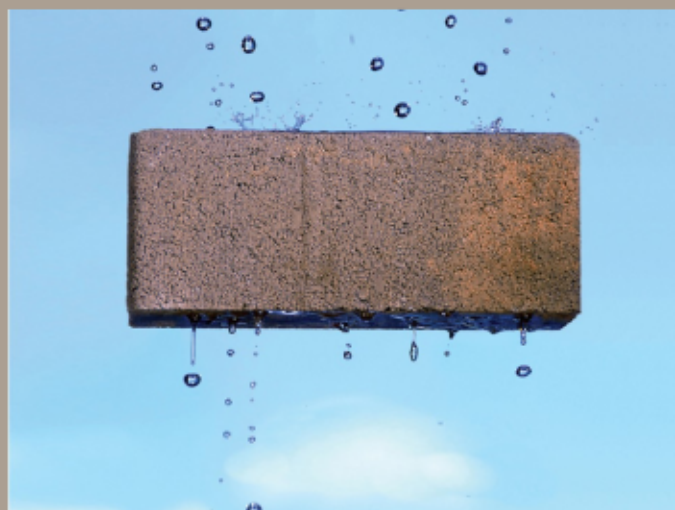




### ***Uses:***

*Commercial and residential parking and pedestrian areas  
Sloped areas (driveways)  
Problem drainage areas  
Walkways, crosswalks, plazas and patios (reduces puddles)  
Areas where water runoff or standing water might be a concern  
Places where water needs to be directed away from or towards a specific area*

***Any area where standard pavers can be utilized***



***Allows drainage in excess of 3"/hr***

### ***Benefits:***

- *Greatly reduces the chance of erosion*
- *Stronger than poured concrete or asphalt*
- *Re-hydrates the soil below with water*
- *Returns water to ground aquifers*
- *Reduces water runoff by as much as 100%*
- *No unsightly gaps like ordinary permeable pavers*
- *Supports surrounded vegetation by re-hydrating sub-soil*
- *ADA compliant*
- ***Exceeds State of California C-3 standards***





**Holland**  
(60mm) 4"x8"  
(80mm) 4"x8"

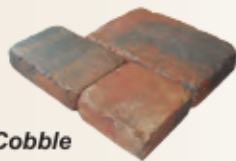


**Pompeii**  
(70mm) 18"/14"



**Cobble & Rustic Cobble**

Large (60mm) 6"x9"  
Medium (60mm) 6"x6"  
Small (60mm) 6"x4.5"  
Square (60mm) 5"x5"



**Plaza Stone**  
**Smooth or Textured**  
(70mm) 8"x16"



**City Estate  
with Micro Chamfer**  
(60mm) 6"x12"  
(80mm) 12"x12"



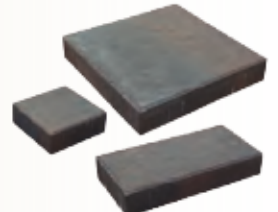
**Estate (Smooth)**  
(80mm) & (60mm) 12"x12"  
(80mm) & (60mm) 6"x12"  
(80mm) & (60mm) 6"x6"



**Estate (Textured)**  
(80mm) & (60mm) 12"x12"  
(80mm) & (60mm) 6"x12"  
(80mm) & (60mm) 6"x6"



**Canyon Rock**  
(80mm) & (60mm) 12"x12"  
(80mm) & (60mm) 6"x12"  
(80mm) & (60mm) 6"x6"



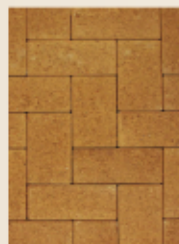
**Grand Estate**

*Other styles and custom colors available. Call for specific information.*

*Slightly higher pricing for W-colors which uses white cement.*



*S1 Red*



*S2 Tan*



*S3 Brown*



*S4 Gray*



*S5 Charcoal*



*B1 Shasta Redwood  
(Red/Brown)*



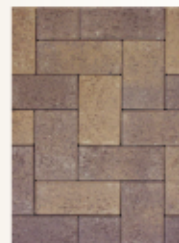
*B2 Summit Sunrise  
(Gray/Tan/Charcoal)*



*B3 Santa Fe Blush  
(Red/Tan)*



*B4 Painted Desert  
(Red/Tan/Charcoal)*



*B5 Mojave Dunes  
(Tan/Brown)*



*B6 Tahoe Granite  
(Gray/Charcoal)*



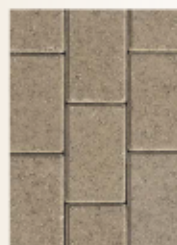
*B7 Monterey Sands  
(Tan/Charcoal)*



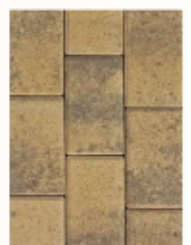
*B8 Country Loam  
(Brown/Charcoal)*



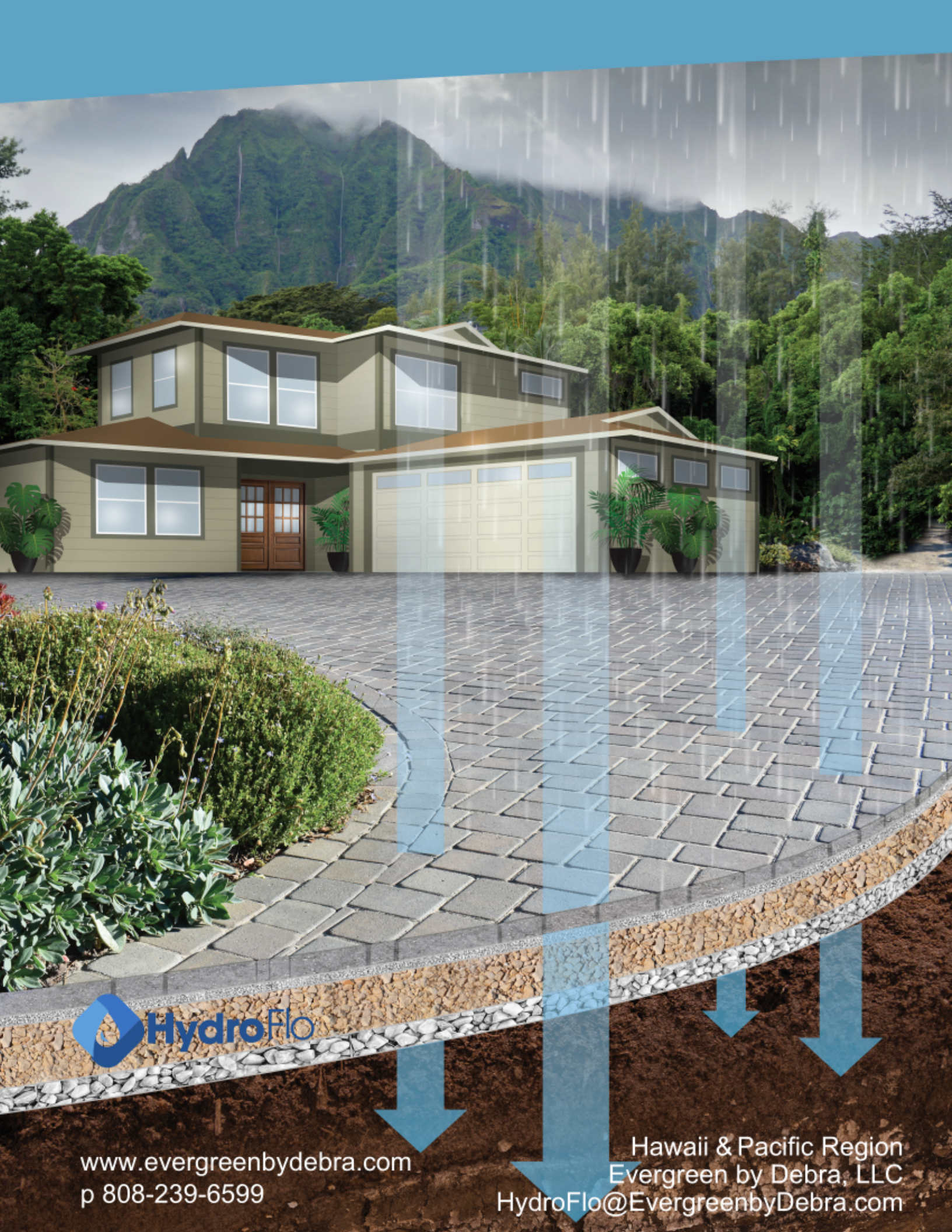
*B9 Island Ember  
(Red/Charcoal)*



*W1 SB Tan  
(Santa Barbara Tan)*



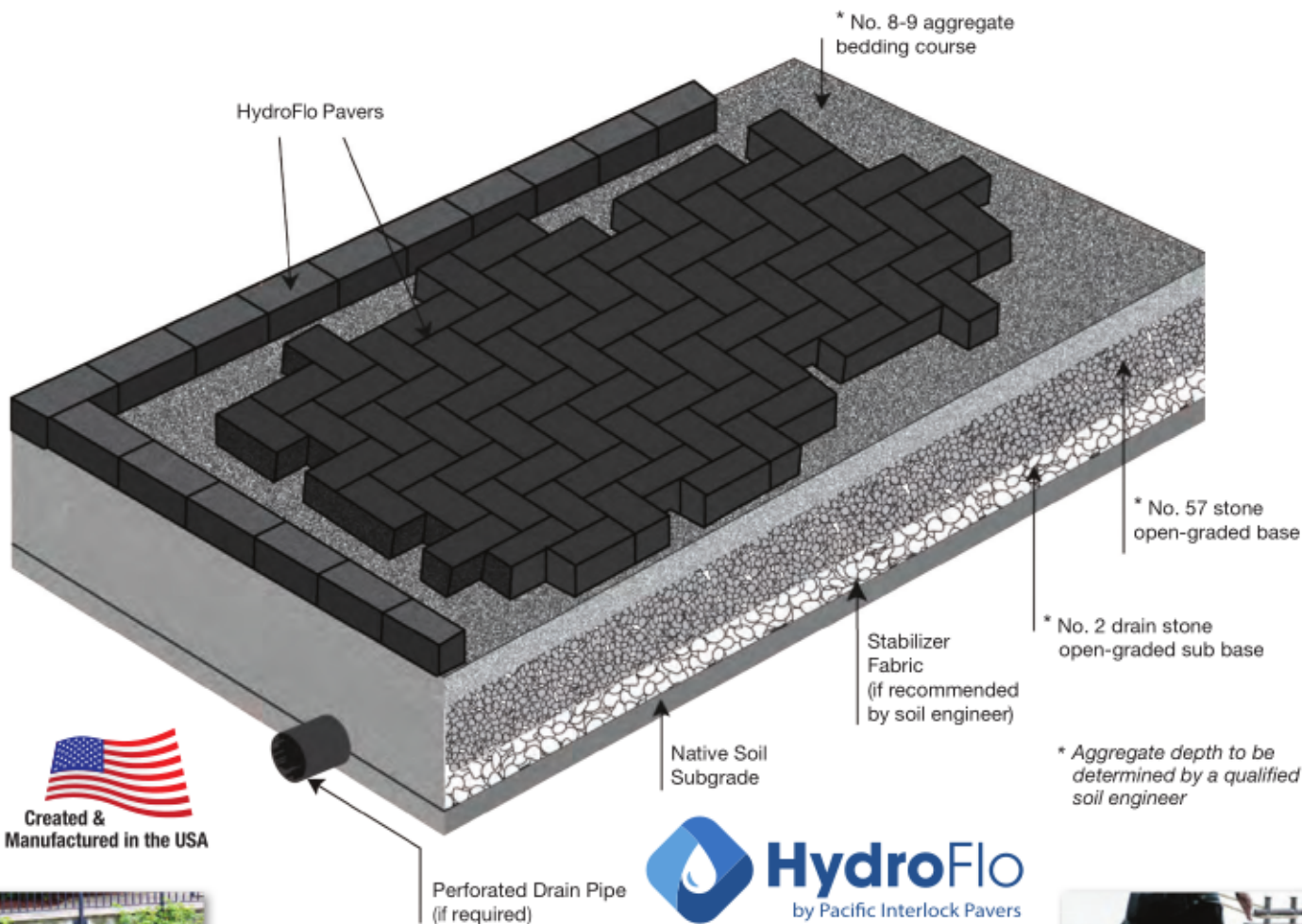
*W2 Sahara Sand  
(Cream/Tan)*



[www.evergreenbydebra.com](http://www.evergreenbydebra.com)  
p 808-239-6599

Hawaii & Pacific Region  
Evergreen by Debra, LLC  
[HydroFlo@EvergreenbyDebra.com](mailto:HydroFlo@EvergreenbyDebra.com)

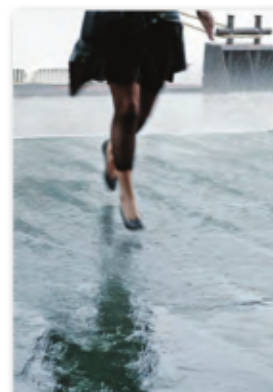
# Just Add Water!



Created & Manufactured in the USA



**HydroFlo**  
by Pacific Interlock Pavers



Please consult a certified soil engineer prior to installation of permeable pavers as many things affect drainage. Some of these are:

- Land use • Vegetation • Soil type • Drainage area and pattern • Slope • Basin shape •
- Topography • Natural conditions (ponds, etc.) •

**For additional information or samples please contact:**



US Patent # 7927037 B2



CAN Patent # 2,746,731



EU Patent # 246284



AUS Patent # 2010281428



**EVERGREEN**  
BY DEBRA, LLC SINCE 1994

**Hawaii & Pacific Region**

**p (808)-239-6599**

**[www.evergreenbydebra.com](http://www.evergreenbydebra.com)**